

**STANDARD INSTRUMENT DEPARTURES (SID)
RWYS SOUTH (RNAV)
PERTH, WA (YPPH)**

21 MAR 2024

ATIS 113.7 123.8	ACD 118.55	SMC E of RWY 03/21 122.2 W of RWY 03/21 121.7	TWR 127.4	DEP 118.7	Bearings are Magnetic Elevations in FEET AMSL
---------------------	---------------	---	--------------	--------------	--

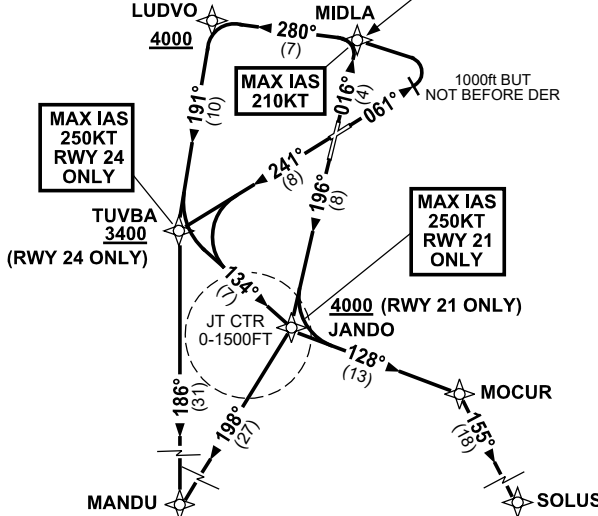
NOT TO SCALE



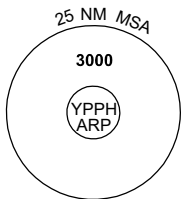
CAUTION: DO NOT OVERFLY MIDLA.
Pearce Airport traffic operates 3NM north of MIDLA.

**SPEED
MAX IAS 250KT
BELOW 10,000ft**

RNP1



RWY 03: GRAD 3.3%
RWY 06: GRAD 4.0% to 2800ft
RWY 21: GRAD 3.7% to 2800ft
(7.9% to 4000ft)
RWY 24: GRAD 3.7% to 2800ft
(6.6% to 3400ft)



10 NM MSA 2700

MANDU SIX DEPARTURE

RWY 03

MAX IAS 210KT until MIDLA

- Track 016° to MIDLA
- Turn LEFT, track 280° to LUDVO
- **Cross** LUDVO AT or ABV 4000ft
- Turn LEFT, track 191° to TUVBA
- Turn LEFT, track 186° to MANDU

RWY 06

MAX IAS 210KT until MIDLA

- Track 061°
- AT 1000ft but not before DER
- Turn LEFT, track DCT to MIDLA
- Turn LEFT, track 280° to LUDVO
- **Cross** LUDVO AT or ABV 4000ft
- Turn LEFT, track 191° to TUVBA
- Turn LEFT, track 186° to MANDU

RWY 21

MAX IAS 250KT until JANDO

- Track 196° to JANDO
- **Cross** JANDO AT or ABV 4000ft
- Track 198° to MANDU

RWY 24

MAX IAS 250KT until TUVBA

- Track 241° to TUVBA
- **Cross** TUVBA AT or ABV 3400ft
- Turn LEFT, track 186° to MANDU

SOLUS SIX DEPARTURE

RWY 03

MAX IAS 210KT until MIDLA

- Track 016° to MIDLA
- Turn LEFT, track 280° to LUDVO
- **Cross** LUDVO AT or ABV 4000ft
- Turn LEFT, track 191° to TUVBA
- Turn LEFT, track 134° to JANDO

RWY 06

MAX IAS 210KT until MIDLA

- Track 061°
- AT 1000ft but not before DER
- Turn LEFT, track DCT to MIDLA
- Turn LEFT, track 280° to LUDVO
- **Cross** LUDVO AT or ABV 4000ft
- Turn LEFT, track 191° to TUVBA
- Turn LEFT, track 134° to JANDO

RWY 21

MAX IAS 250KT until JANDO

- Track 196° to JANDO
- **Cross** JANDO AT or ABV 4000ft

RWY 24

MAX IAS 250KT until TUVBA

- Track 241° to TUVBA
- **Cross** TUVBA AT or ABV 3400ft
- Turn LEFT, track 134° to JANDO

From JANDO

- Track 128° to MOCUR
- Turn RIGHT, track 155° to SOLUS

Changes: MSA REF, DEP INSTRUCTION, GRAD, ALT RQMNTS, VALIDITY NUMBERS, IAS, Editorial.

PPHP09-178