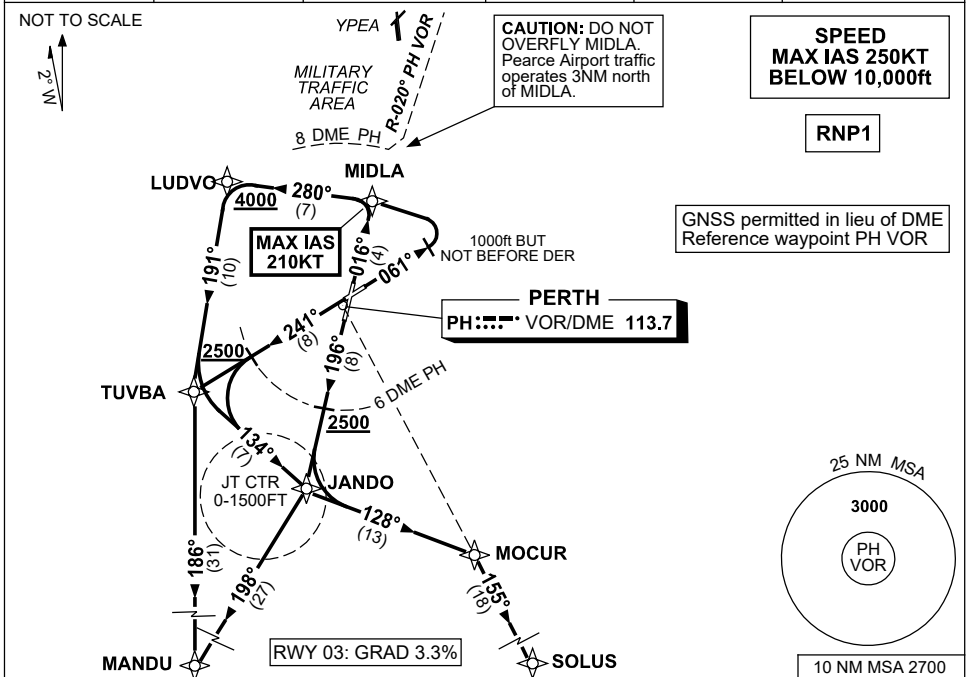


# STANDARD INSTRUMENT DEPARTURES (SID) RWYS SOUTH (RNAV) PERTH, WA (YPPH)

30 NOV 2023

ATIS 113.7 123.8	ACD 118.55	SMC E of RWY 03/21 122.2 W of RWY 03/21 121.7	TWR 127.4	DEP 118.7	Bearings are Magnetic Elevations in FEET AMSL
---------------------	---------------	---	--------------	--------------	--



## MANDU FIVE DEPARTURE

### RWY 03

**MAX IAS 210KT** until MIDLA

- Track 016° to MIDLA
- Turn LEFT, track 280° to LUDVO
- **Cross** LUDVO AT or ABV 4000ft
- Turn LEFT, track 191° to TUVBA
- Turn LEFT, track 186° to MANDU

### RWY 06

GRAD 4.0% to 2800ft

**MAX IAS 210KT** until MIDLA

- Track 061°
- AT 1000ft but not before DER (1.3 DME)
- Turn LEFT, track DCT to MIDLA
- Turn LEFT, track 280° to LUDVO
- **Cross** LUDVO AT or ABV 4000ft
- Turn LEFT, track 191° to TUVBA
- Turn LEFT, track 186° to MANDU

### RWY 21

GRAD 3.7% to 2800ft

- Track 196° to JANDO
- **Cross** 6 DME PH AT or ABV 2500ft
- Track 198° to MANDU

### RWY 24

GRAD 3.7% to 2800FT

- Track 241° to TUVBA
- **Cross** 6 DME PH AT or ABV 2500ft
- Turn LEFT, track 186° to MANDU

## SOLUS FIVE DEPARTURE

### RWY 03

**MAX IAS 210KT** until MIDLA

- Track 016° to MIDLA
- Turn LEFT, track 280° to LUDVO
- **Cross** LUDVO AT or ABV 4000ft
- Turn LEFT, track 191° to TUVBA
- Turn LEFT, track 134° to JANDO

### RWY 06

**MAX IAS 210KT** until MIDLA

- GRAD 4.0% to 2800ft
- Track 061°
- AT 1000ft but not before DER (1.3 DME)
- Turn LEFT, track DCT to MIDLA
- Turn LEFT, track 280° to LUDVO
- **Cross** LUDVO AT or ABV 4000ft
- Turn LEFT, track 191° to TUVBA
- Turn LEFT, track 134° to JANDO

### RWY 21

GRAD 3.7% to 2800ft

- Track 196° to JANDO
- **Cross** 6 DME PH AT or ABV 2500ft

### RWY 24

GRAD 3.7% to 2800ft

- Track 241° to TUVBA
- **Cross** 6 DME PH AT or ABV 2500ft
- Turn LEFT, track 134° to JANDO

### From JANDO

- Track 128° to MOCUR
- Turn RIGHT, track 155° to SOLUS

Changes: WAYPOINT NAMES, VALIDITY NUMBERS, Editorial.

PPHPD09-177