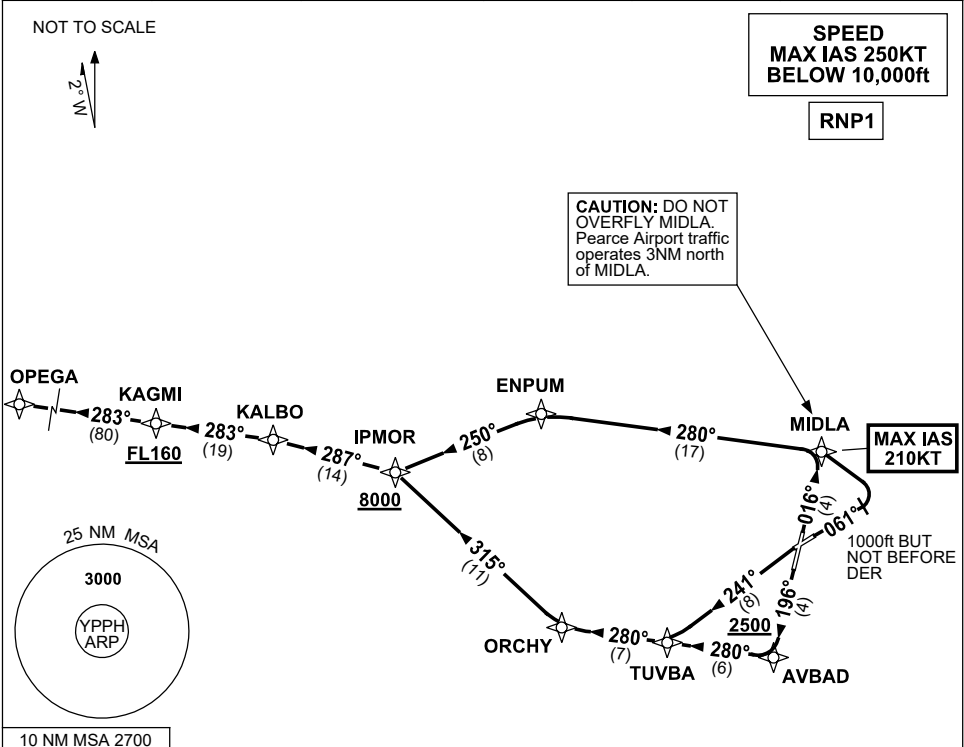


STANDARD INSTRUMENT DEPARTURES (SID)  
**OPEGA ONE (RNAV)**  
**PERTH, WA (YPPH)**

21 MAR 2024

ATIS 113.7 123.8	ACD 118.55	SMC E of RWY 03/21 122.2 W of RWY 03/21 121.7	TWR 127.4	DEP 118.7	Bearings are Magnetic Elevations in FEET AMSL
---------------------	---------------	---	--------------	--------------	--



**OPEGA ONE DEPARTURE**

**RWY 03**

- GRAD 3.3% (4.7% to 8000ft)
- MAX IAS 210KT UNTIL MIDLA**
- Track 016° to MIDLA

**RWY 06**

- GRAD 4.0% to 2800ft (4.7% to 8000ft)
- **MAX IAS 210KT UNTIL MIDLA**
- Track 061°
- AT 1000ft but not before DER turn LEFT
- Track DCT to MIDLA

**From MIDLA**

- Turn LEFT, track 280° to ENPUM
- Turn LEFT, track 250° to IPMOR
- **Cross IPMOR AT or ABV 8000ft**
- Turn RIGHT, track 287° to KALBO
- Turn LEFT, track 283° to KAGMI
- **Cross KAGMI AT or ABV FL160**
- Track 283° to OPEGA, then as cleared

**RWY 21**

- GRAD 3.7% to 2800ft (4.7% to 8000ft)
- Track 196° to AVBAD
- **Cross AVBAD AT or ABV 2500ft**
- Turn RIGHT, track 280° to TUVBA

**RWY 24**

- GRAD 3.7% to 2800ft (4.7% to 8000ft)
- Track 241° to TUVBA

**From TUVBA**

- Track 280° to ORCHY
- Turn RIGHT, track 315° to IPMOR
- **Cross IPMOR AT or ABV 8000ft**
- Turn LEFT, track 287° to KALBO
- Turn LEFT, track 283° to KAGMI
- **Cross KAGMI AT or ABV FL160**
- Track 283° to OPEGA, then as cleared

Changes: MSA REF, DEP INSTRUCTIONS, Editorial.

PPHDP08-178