

**STANDARD INSTRUMENT DEPARTURES (SID)
RWYS EAST (NON-JET) (RNAV)
PERTH, WA (YPPH)**

21 MAR 2024

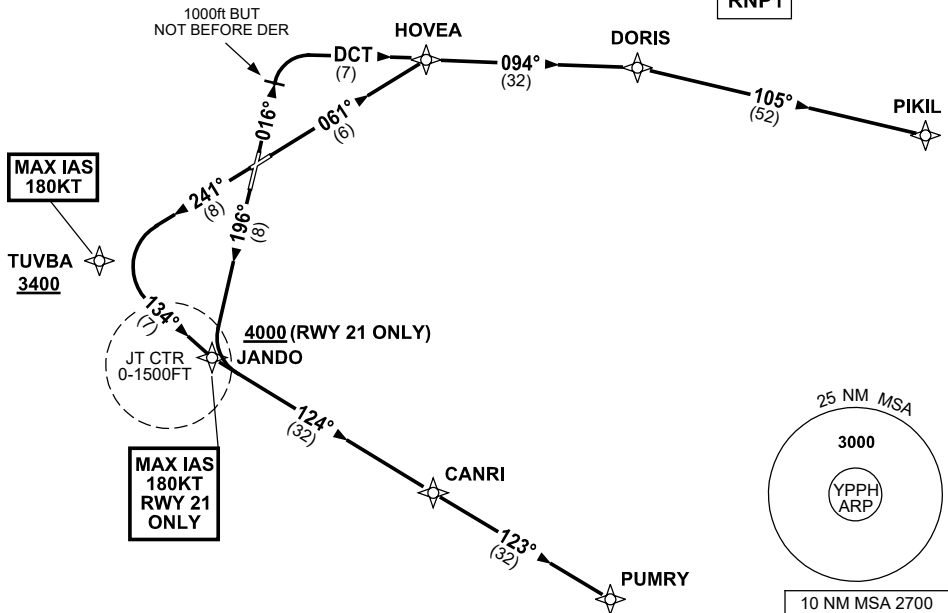
ATIS 113.7 123.8	ACD 118.55	SMC E of RWY 03/21 122.2 W of RWY 03/21 121.7	TWR 127.4	DEP 118.7	Bearings are Magnetic Elevations in FEET AMSL
---------------------	---------------	---	--------------	--------------	--

NOT TO SCALE



SPEED
MAX IAS 250KT
BELOW 10,000ft
NON-JET BLW 28,000KG
TO 4000ft MAX 150KT
4000ft TO 10,000ft MAX 180KT

RNP1



PIKIL THREE DEPARTURE (NON-JET)

RWY 03

- GRAD 4.0% to 2800ft THEN 3.3%
- Track 016°
- AT 1000ft but not before DER
Turn RIGHT, track DCT to HOVEA
- Track 094° to DORIS
- Turn RIGHT, track 105° to PIKIL,
then as cleared

RWY 06

- GRAD 4.0% to 2800ft THEN 3.3%
- Track 061° to HOVEA
- Turn RIGHT, track 094° to DORIS
- Turn RIGHT, track 105° to PIKIL,
then as cleared

PUMRY SIX DEPARTURE (NON-JET)

RWY 21

- GRAD 4.0% to 2800ft
THEN 3.3% (7.9% to 4000ft)
MAX IAS 180KT until JANDO
- Track 196° to JANDO
Cross JANDO AT or ABV 4000ft
- Turn LEFT, track 124° to CANRI
- Track 123° to PUMRY, then as cleared

RWY 24

- GRAD 4.0% to 2800ft
THEN 3.3% (6.6% to 3400ft)
MAX IAS 180KT until TUVBA
- Track 241° to TUVBA
Cross TUVBA AT or ABV 3400ft
- Turn LEFT, track 134° to JANDO
- Track 124° to CANRI
- Track 123° to PUMRY, then as cleared

Changes: MSA REF, DEP INSTRUCTIONS, GRAD, ALT RQMNTS, VALIDITY NUMBER, IAS, Editorial.

PPHPD07-178