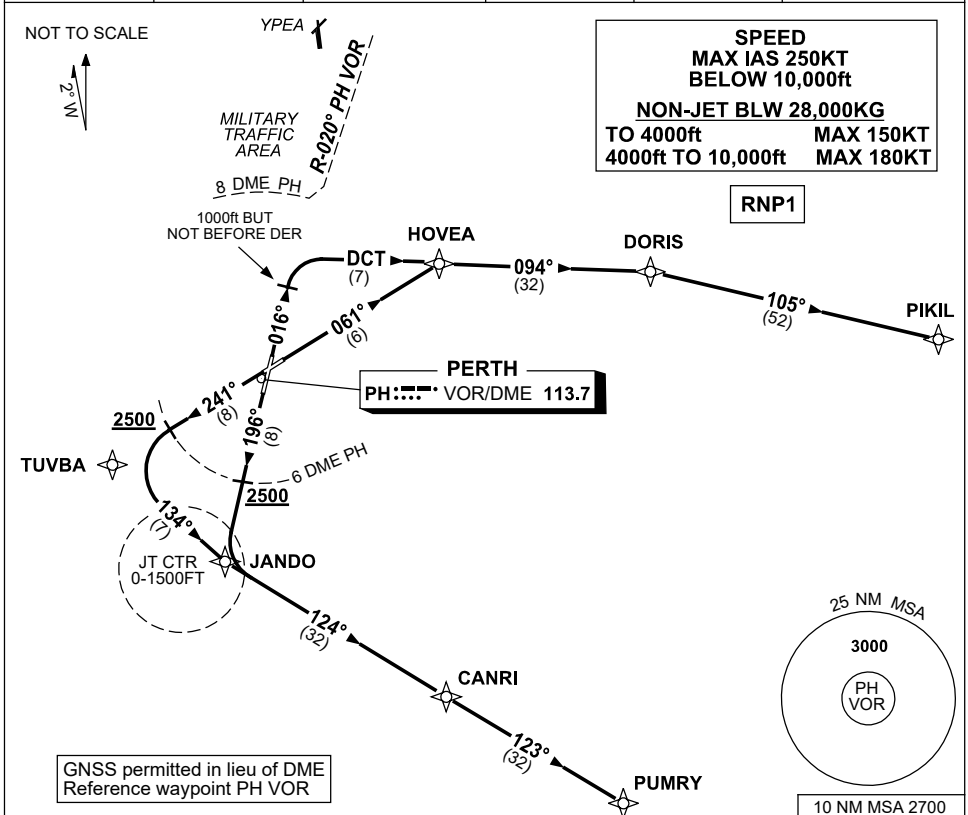


**STANDARD INSTRUMENT DEPARTURES (SID)  
RWYS EAST (NON-JET) (RNAV)  
PERTH, WA (YPPH)**

**30 NOV 2023**

ATIS 113.7 123.8	ACD 118.55	SMC E of RWY 03/21 122.2 W of RWY 03/21 121.7	TWR 127.4	DEP 118.7	Bearings are Magnetic Elevations in FEET AMSL
---------------------	---------------	---	--------------	--------------	--



**PIKIL THREE DEPARTURE (NON-JET)**

GRAD 4.0% to 2800ft THEN 3.3%

**RWY 03**

- Track 016°
- AT 1000ft but not before DER (1.1 DME)  
Turn RIGHT, track DCT to HOVEA
- Track 094° to DORIS
- Turn RIGHT, track 105° to PIKIL,  
thence as cleared

**RWY 06**

- Track 061° to HOVEA
- Turn RIGHT, track 094° to DORIS
- Turn RIGHT, track 105° to PIKIL,  
thence as cleared

**PUMRY FIVE DEPARTURE (NON-JET)**

GRAD 4.0% to 2800ft THEN 3.3%

**RWY 21**

- Track 196° to JANDO  
Cross 6 DME PH AT or ABV 2500ft
- Turn LEFT, track 124° to CANRI
- Track 123° to PUMRY,  
thence as cleared

**RWY 24**

- Track 241° to TUVBA  
Cross 6 DME PH AT or ABV 2500ft
- Turn LEFT, track 134° to JANDO
- Track 124° to CANRI
- Track 123° to PUMRY,  
thence as cleared

Changes: TUVBA REPLACES SWANN, VALIDITY NUMBER, Editorial.

PPHPD07-177