

STANDARD INSTRUMENT DEPARTURES (SID)
 AMANA FOUR (JET) (RNAV)
 PERTH, WA (YPPH)

21 MAR 2024

ATIS 113.7 123.8	ACD 118.55	SMC E of RWY 03/21 122.2 W of RWY 03/21 121.7	TWR 127.4	DEP 118.7	Bearings are Magnetic Elevations in FEET AMSL
---------------------	---------------	-----------------------------------------------------	--------------	--------------	--------------------------------------------------

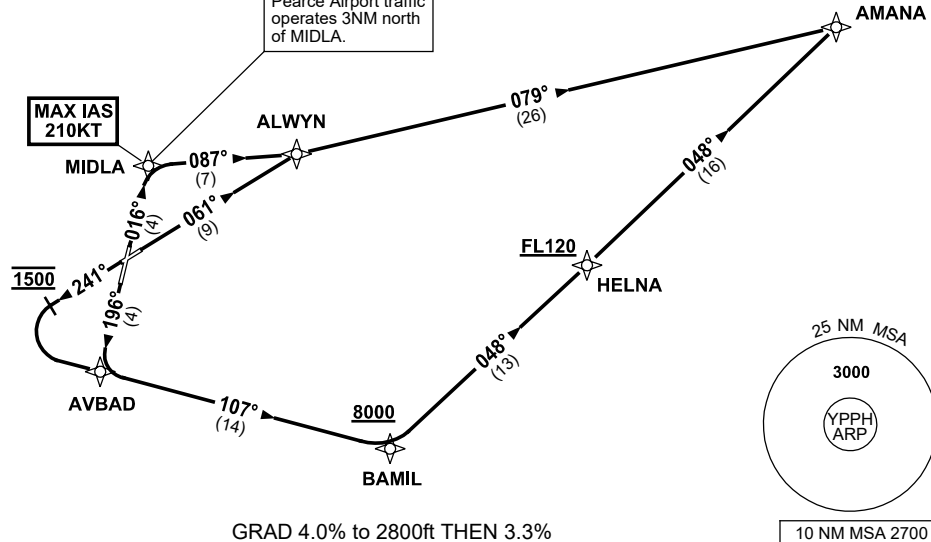
NOT TO SCALE



SPEED
 MAX IAS 250KT
 BELOW 10,000ft

RNP1

CAUTION: DO NOT OVERFLY MIDLA.
 Pearce Airport traffic operates 3NM north of MIDLA.



AMANA FOUR DEPARTURE (JET)

- RWY 03**
 MAX IAS 210KT until MIDLA
- Track 016° to MIDLA,
 - Turn RIGHT, track 087° to ALWYN,
 - Turn LEFT, track 079° to AMANA, then as cleared
- RWY 06**
- Track 061° to ALWYN,
 - Turn RIGHT, track 079° to AMANA, then as cleared

- RWY 21**
- Track 196° to AVBAD
- RWY 24**
- Track 241°
 - AT 1500ft turn LEFT,
 - Track DCT to AVBAD

- From AVBAD**
- Track 107° to BAMIL
 Cross BAMIL AT or ABV 8000ft
 - Turn LEFT, track 048° to HELNA,
 Cross HELNA AT or ABV FL120,
 - Track 048° to AMANA, then as cleared

Changes: MSA REF, Editorial.