

# STANDARD INSTRUMENT DEPARTURES (SID) AMANA FOUR (JET) (RNAV) PERTH, WA (YPPH)

30 NOV 2023

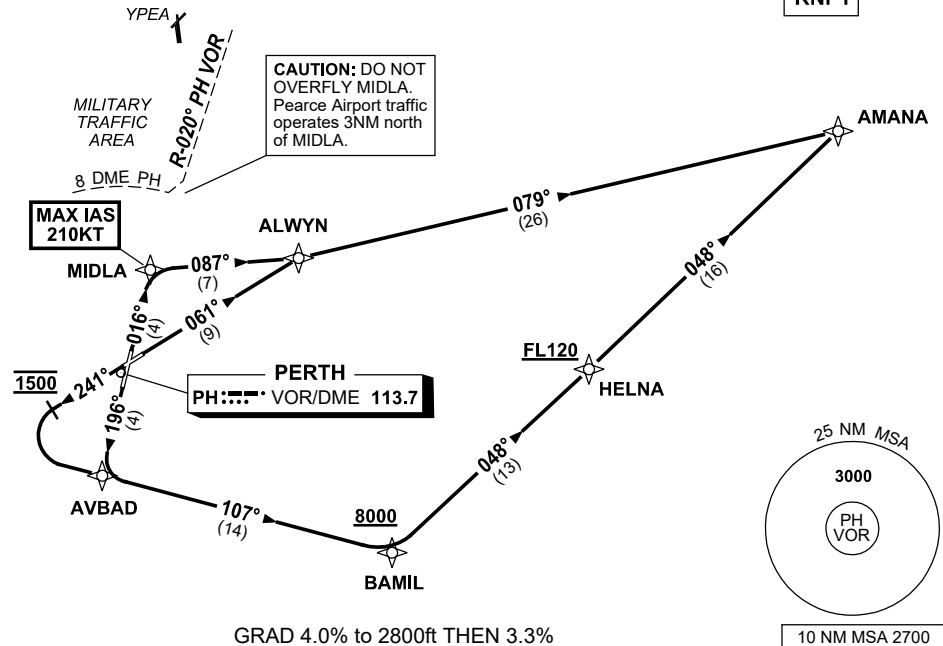
ATIS 113.7 123.8	ACD 118.55	SMC E of RWY 03/21 122.2 W of RWY 03/21 121.7	TWR 127.4	DEP 118.7	Bearings are Magnetic Elevations in FEET AMSL
---------------------	---------------	---	--------------	--------------	--

NOT TO SCALE

GNSS permitted in lieu of DME  
Reference waypoint PH VOR

**SPEED**  
**MAX IAS 250KT**  
**BELOW 10,000ft**

**RNP1**



## AMANA FOUR DEPARTURE (JET)

### RWY 03

**MAX IAS 210KT** until MIDLA

- Track 016° to MIDLA,
- Turn RIGHT, track 087° to ALWYN,
- Turn LEFT, track 079° to AMANA, thence as cleared

### RWY 06

- Track 061° to ALWYN,
- Turn RIGHT, track 079° to AMANA, thence as cleared

### RWY 21

- Track 196° to AVBAD

### RWY 24

- Track 241°
- AT 1500ft turn LEFT,
- Track DCT to AVBAD

### From NAVEY

- Track 107° to BAMIL  
**Cross** BAMIL AT or ABV 8000ft
- Turn LEFT, track 048° to HELNA,  
**Cross** HELNA AT or ABV FL120,
- Track 048° to AMANA, thence as cleared