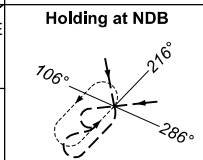
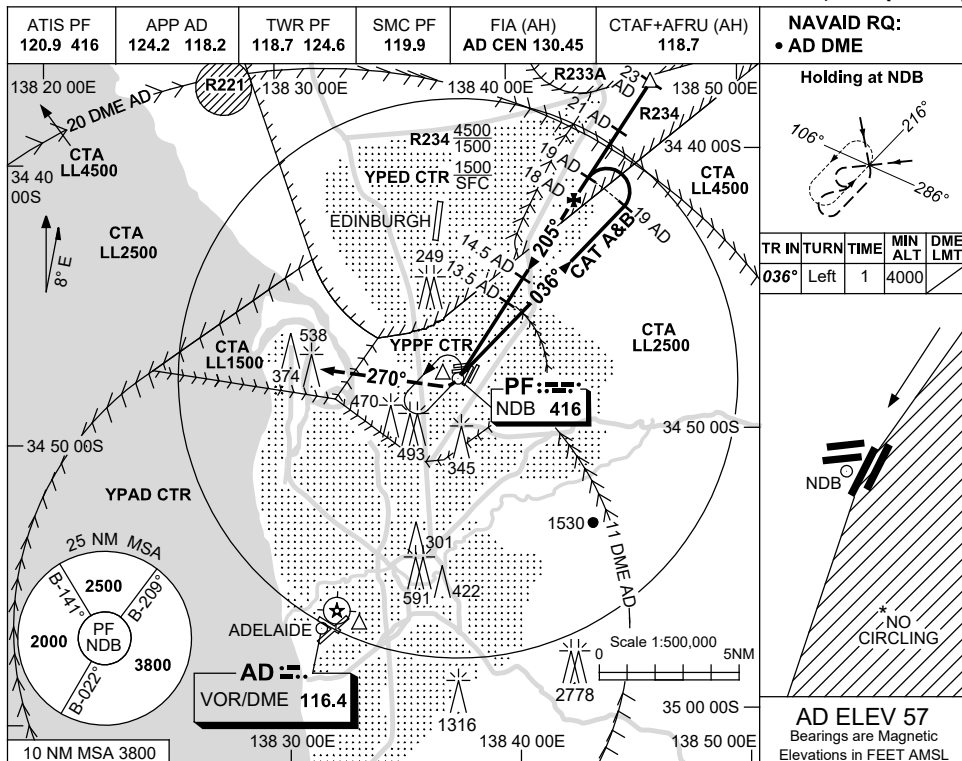


USE QNH

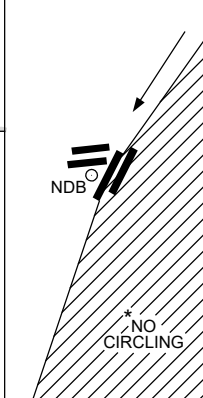
NDB-Z RWY 21R

25 MAR 2021

ADELAIDE/PARAFIELD, SA (YPPF)

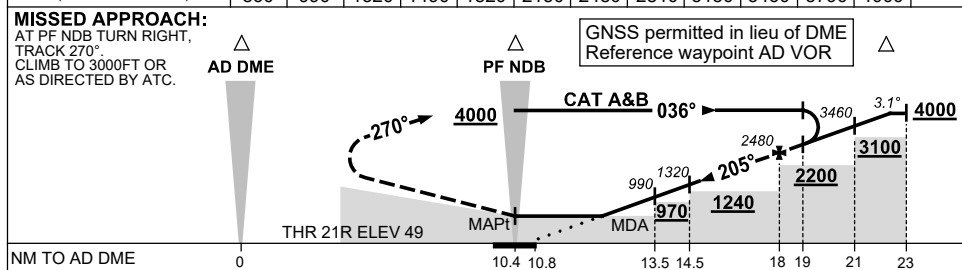


TR	IN TURN	TIME	MIN ALT	DME LMT
036°	Left	1	4000	



AD ELEV 57
Bearings are Magnetic
Elevations in FEET AMSL

DIST BY DME (AD)	13.1	13.5	14.5	15	16	17	18	19	20	21	22	22.6	
ALT (3.1° APCH PATH)	860	990	1320	1490	1820	2150	2480	2810	3130	3460	3790	4000	



NOTES

CATEGORY	A	B	C	D
S-I NDB/DME	860 (811-4.6)		NOT APPLICABLE	
CIRCLING *	1000 (943-2.4)			
ALTERNATE	(1443-4.4)			

1. MAX IAS:
INITIAL:
CAT A&B 140KT.
HOLDING: 150KT.
- *2. NO CIRCLING EAST OF RWY 03L/21R.
3. PROC NOT AVBL FOR TRAINING.

Changes: EDINBURGH AIRPORT RWY DEPICTION, COORD FMT, 249FT OBST ADDED, Editorial.

PPFNB02-166