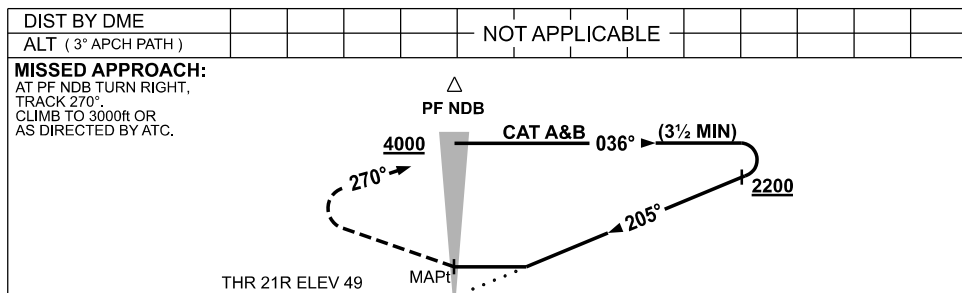
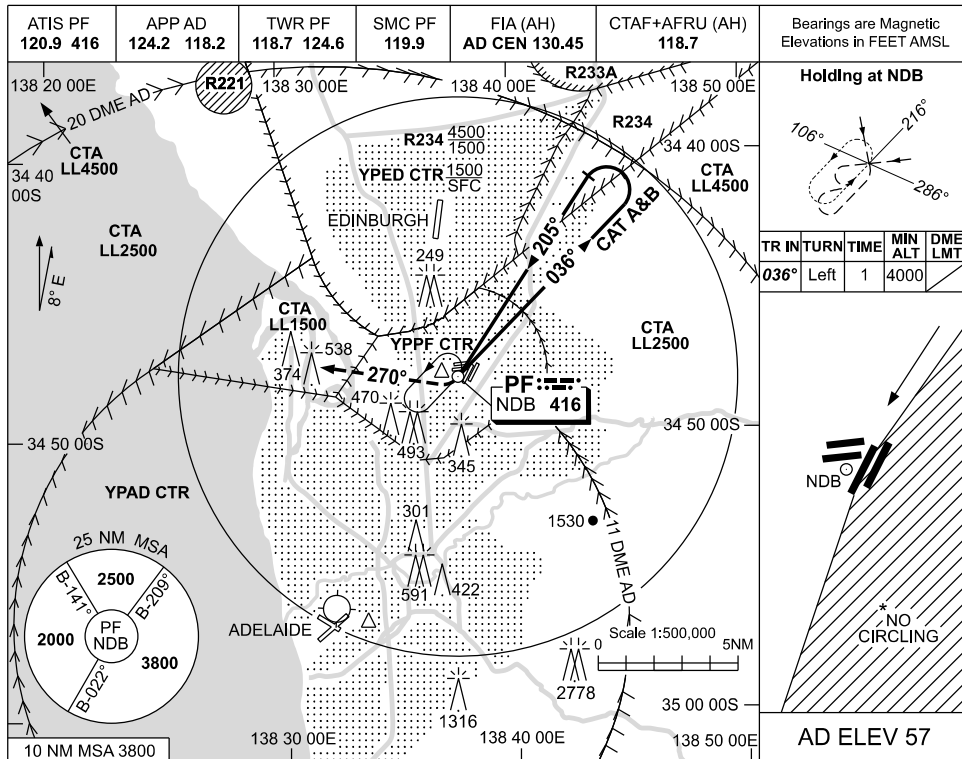


USE QNH

NDB-Y RWY 21R

ADELAIDE/PARAFIELD, SA (YPPF)

19 MAR 2026



NM to AD DME

NOTES

CATEGORY	A	B	C	D
S-I NDB	1580 (1531-5.0)		NOT APPLICABLE	
CIRCLING *	1580 (1523-2.4)			
ALTERNATE	(2023-4.4)			

1. MAX IAS:
INITIAL:
CAT A&B: 140KT.
HOLDING: 150KT.
- * 2. NO CIRCLING EAST OF RWY 03L/21R.
3. PROC NOT AVBL FOR TRAINING.

Changes: YPAD ABN DELETED.

PPFN01-186