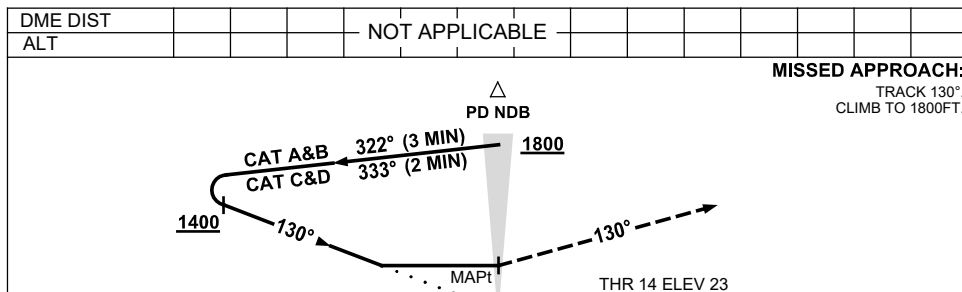
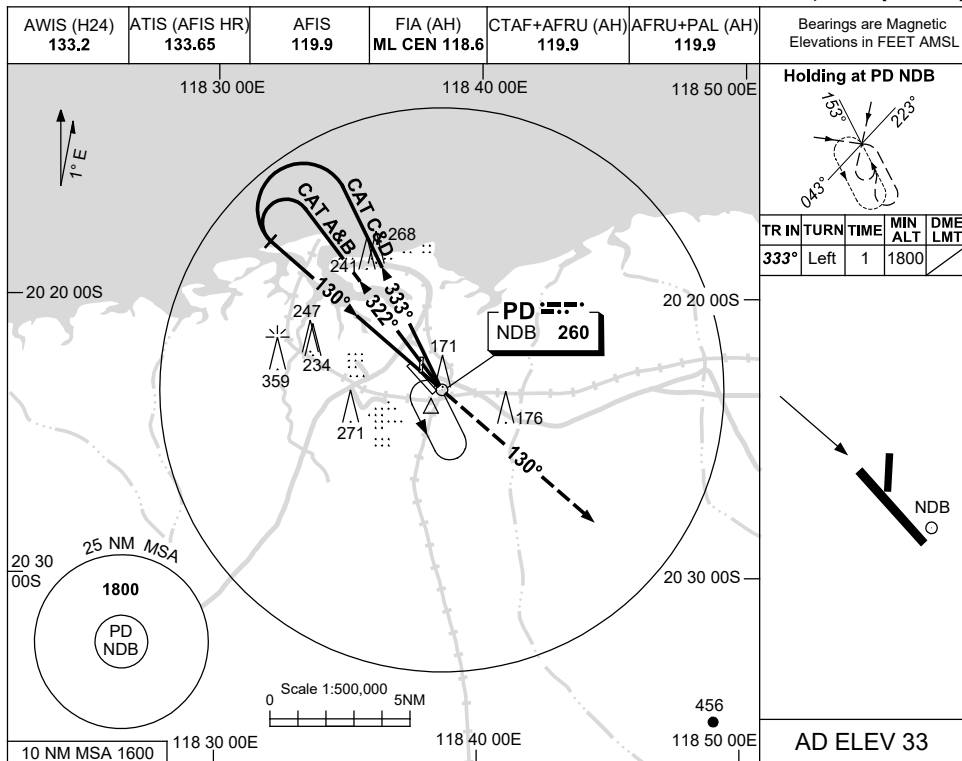


USE QNH

NDB RWY 14

21 MAY 2020

PORT HEDLAND, WA (YPPD)



NOTES

- MAX IAS:
INITIAL : 210KT.

CATEGORY	A	B	C	D
S-I NDB	720 (697-4.0)			
CIRCLING	720 (687-2.4)	820 (787-4.0)	860 (827-5.0)	
ALTERNATE	(1187-4.4)	(1287-6.0)	(1327-7.0)	

Changes: COORD FMT, Editorial.

PPDNB01-163