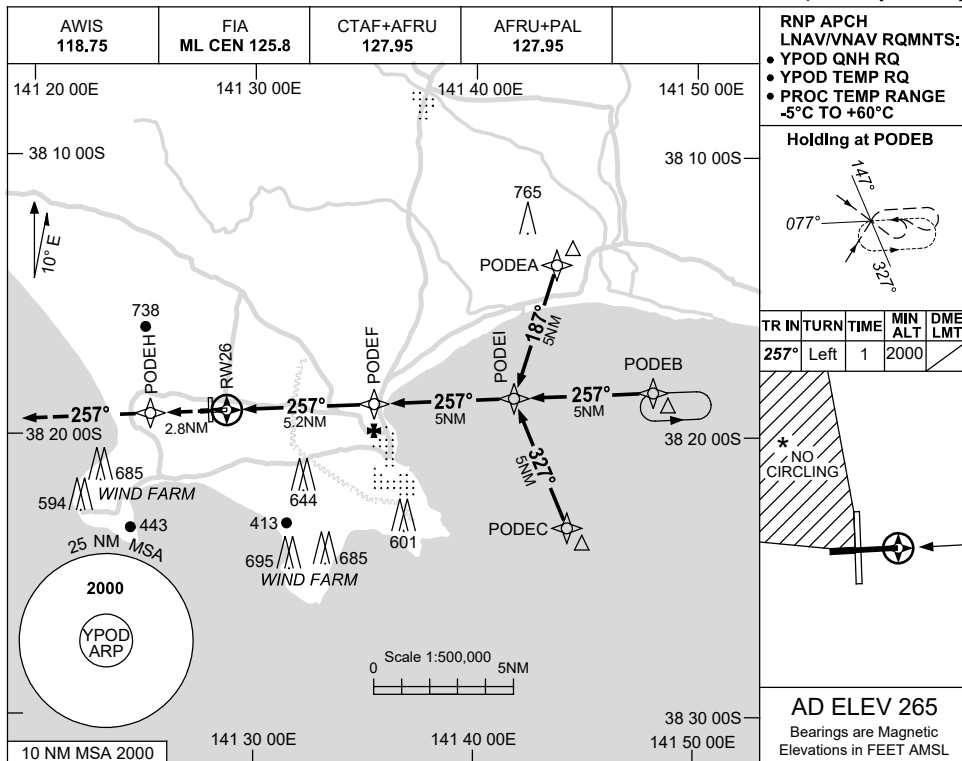


USE QNH

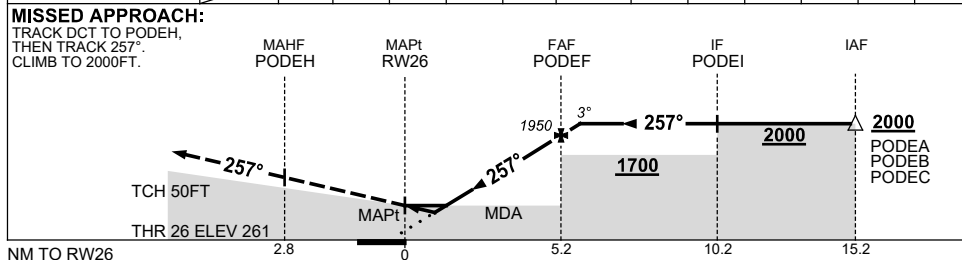
RNP RWY 26

15 JUN 2023

PORTLAND, VIC (YPOD)



NM TO NEXT WPT	RW26	1	1.6	2	3	4	PODEF	0.1					
ALT (3° APCH PATH)		620	810	950	1270	1580	1950	2000					



NOTES

CATEGORY	A	B	C	D
LNAV/VNAV	620 (359-2.0)			NOT APPLICABLE
LNAV	810 (545-3.1)			
CIRCLING *	940 (675-2.4)		1180 (915-4.0)	
ALTERNATE	(1175-4.4)		(1415-6.0)	

1. MAX IAS: INITIAL : 210KT.
- * 2. NO CIRCLING IN SECTOR NW OF RWY 08/26 AND RWY 17/35.

Changes: CHART TITLE, PBN SPECIFICATION BOX, Editorial.

PODGN02-175