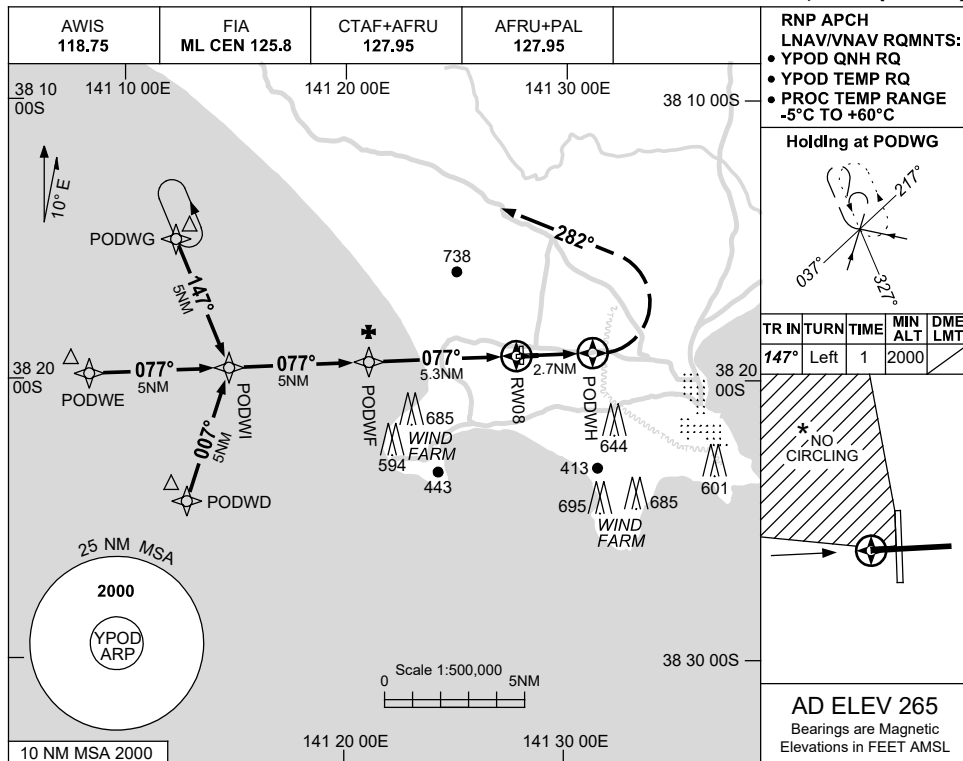


USE QNH

RNP RWY 08
PORTLAND, VIC (YPOD)

15 JUN 2023

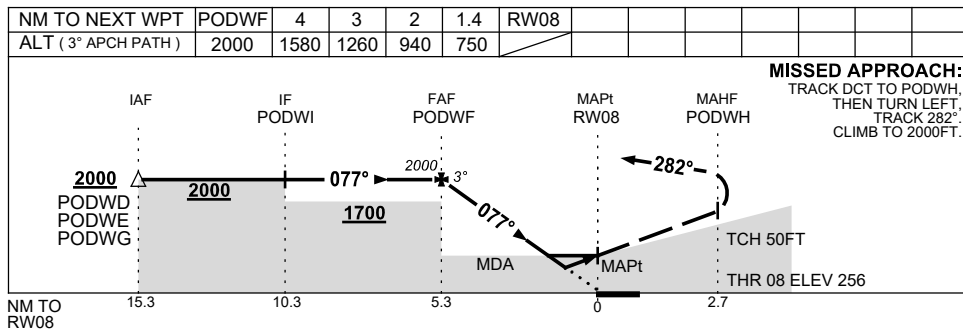


RNP APCH
 LNAV/VNAV RQMNTS:
 • YPOD QNH RQ
 • YPOD TEMP RQ
 • PROC TEMP RANGE
 -5°C TO +60°C

Holding at PODWG

TR	INTURN	TIME	MIN ALT	DME LMT
147°	Left	1	2000	

AD ELEV 265
 Bearings are Magnetic
 Elevations in FEET AMSL



NOTES

CATEGORY	A	B	C	D
LNAV/VNAV	750 (494-2.8)			NOT APPLICABLE
LNAV	940 (684-3.9)			
CIRCLING *	940 (675-2.4)		1180 (915-4.0)	
ALTERNATE	(1175-4.4)		(1415-6.0)	

- 1. MAX IAS:
INITIAL : 210KT.
- * 2. NO CIRCLING IN SECTOR NW OF RWY 08/26 AND RWY 17/35.

Changes: CHART TITLE, PBN SPECIFICATION BOX, Editorial.

PODGN01-175