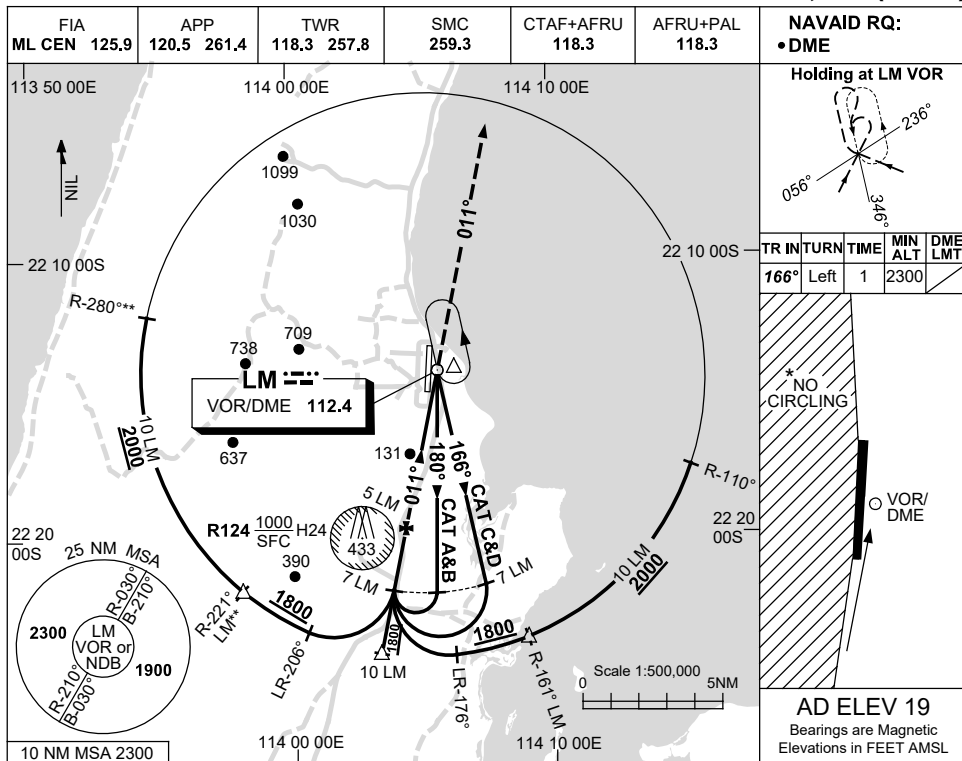


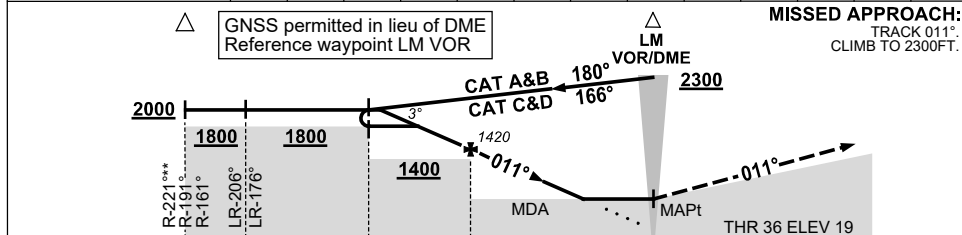
USE QNH

VOR RWY 36
LEARMONTH, WA (YPLM)

15 AUG 2019



DIST TO LM DME	6.8	6	5	4	3	2.5						
ALT (3° APCH PATH)	2000	1730	1420	1100	780	620						



CATEGORY	A	B	C	D
S-I VOR/DME	610 (591-3.3)			
CIRCLING *	660 (641-2.4)	760 (741-4.0)	810 (791-5.0)	
ALTERNATE	(1141-4.4)	(1241-6.0)	(1291-7.0)	

NOTES

- MAX IAS:
INITIAL : 210KT.
HOLDING: 210KT.
- NO CIRCLING WEST OF RWY 18/36.
- WESTERN ARC AVAILABILITY SUBJECT TO ATC CLEARANCE WHEN LM APP/TWR ACTIVATED.
- AWIS (PHONE)
08 6216 2623

Changes: COORD FORMAT, NOTE 4, Editorial.

PLMVO02-160