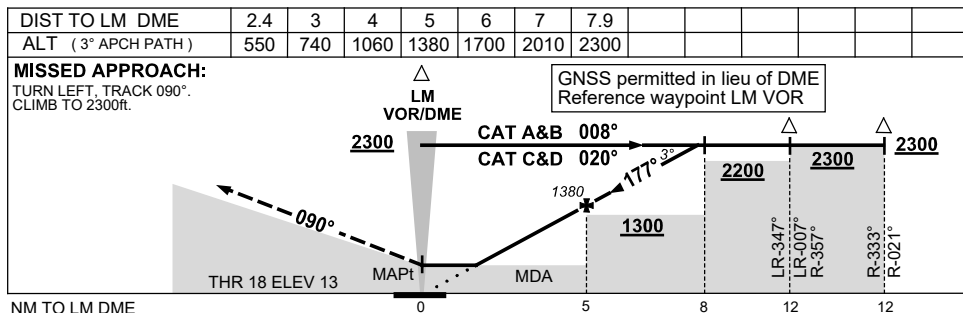
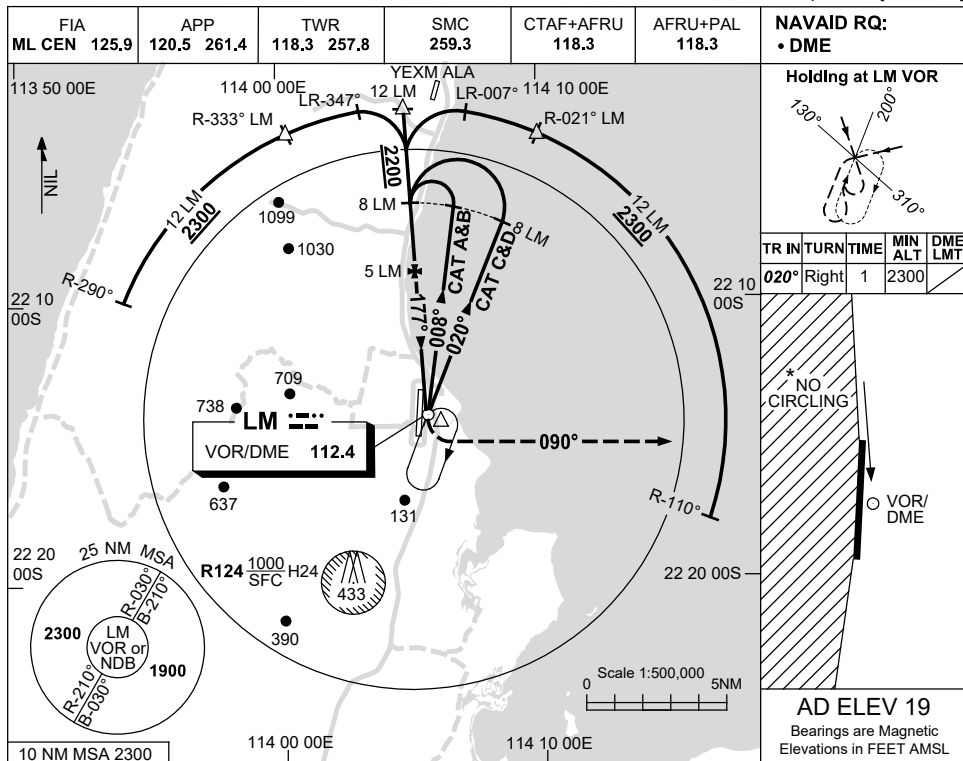


USE QNH

VOR RWY 18
LEARMONTH, WA (YPLM)

21 MAR 2024



CATEGORY	A	B	C	D
S-I VOR/DME	550 (531-3.0)			
CIRCLING *	660 (641-2.4)	760 (741-4.0)	810 (791-5.0)	
ALTERNATE	(1141-4.4)	(1241-6.0)	(1291-7.0)	

NOTES

- MAX IAS:
INITIAL : 210KT.
HOLDING : 210KT.
- * NO CIRCLING WEST OF RWY 18/36.
3. AWIS (PHONE)
08 6216 2623

Changes: YEXM ALA, Editorial.

PLMVO01-178