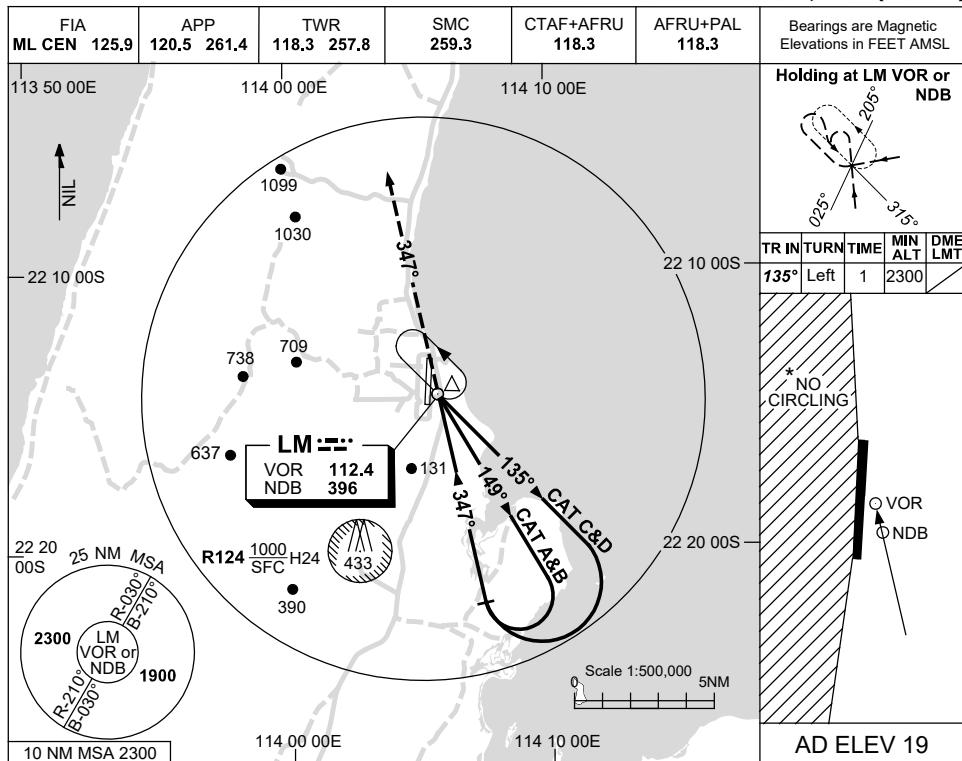


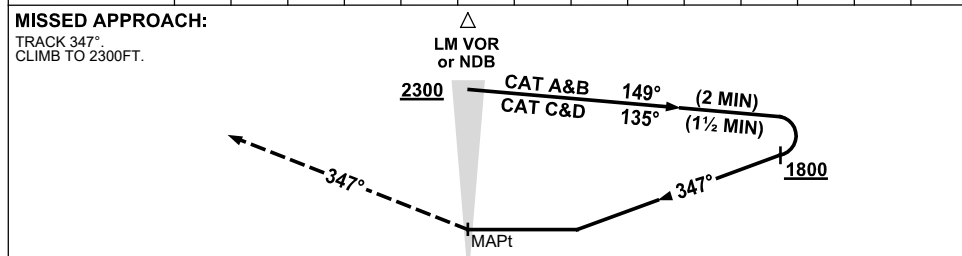
USE QNH

NDB-A or VOR-A
LEARMONTH, WA (YPLM)

15 AUG 2019



DME DIST	NOT APPLICABLE				
ALT					



NOTES

CATEGORY	A	B	C	D
CIRCLING *	660 (641-2.4)	760 (741-4.0)	810 (791-5.0)	
ALTERNATE	(1141-4.4)	(1241-6.0)	(1291-7.0)	

1. MAX IAS:
 INITIAL : 210KT.
 HOLDING: 210KT.
 * 2. NO CIRCLING WEST OF RWY 18/36.
 3. AWIS (PHONE)
 08 6216 2623

Changes: COORD FORMAT, NOTE 3, Editorial.

PLMNB01-160