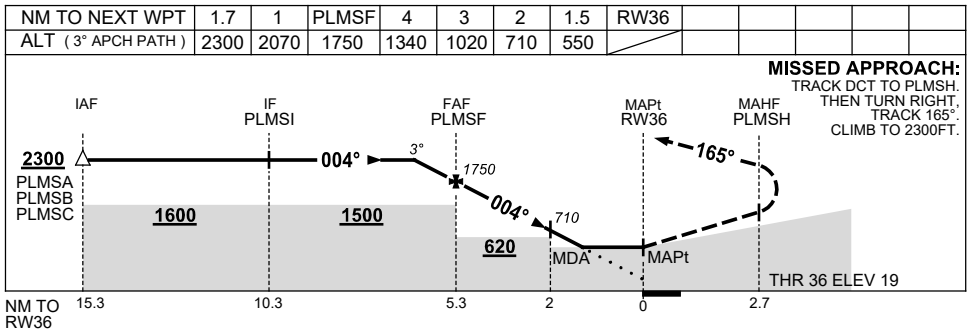
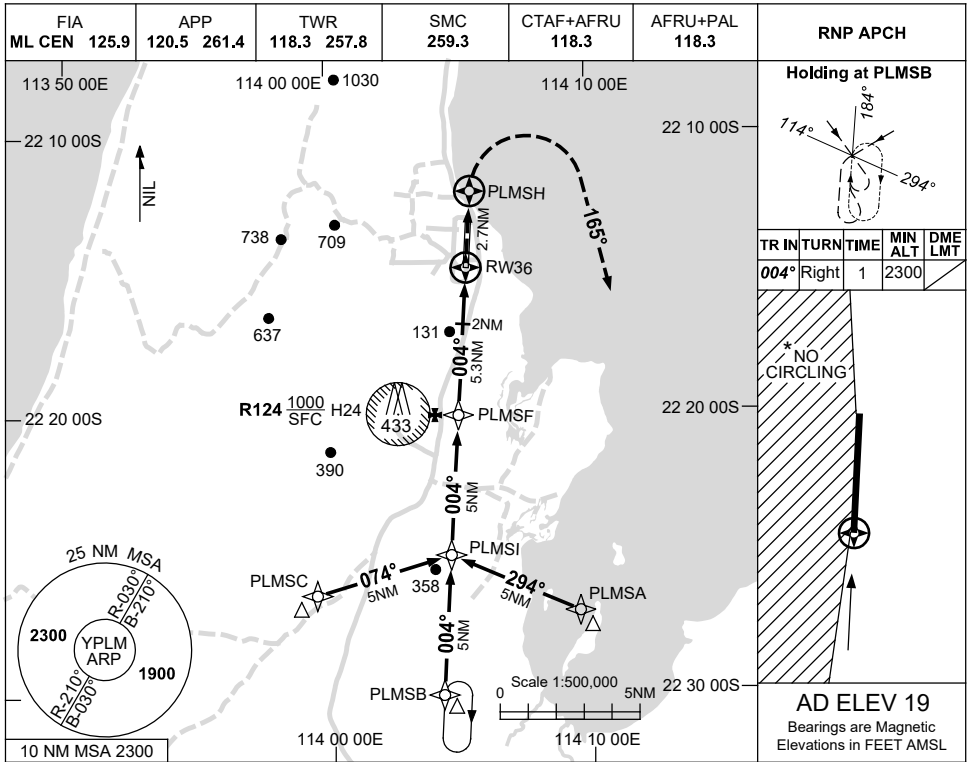


USE QNH

RNP RWY 36
LEARMONTH, WA (YPLM)

30 NOV 2023



NOTES

CATEGORY	A	B	C	D
LNAV	550 (531-3.0)			
CIRCLING*	660 (641-2.4)	760 (741-4.0)	810 (791-5.0)	
ALTERNATE	(1141-4.4)	(1241-6.0)	(1291-7.0)	

- MAX IAS: INITIAL : 210KT.
- NO CIRCLING WEST OF RWY 18/36.
- AWIS (PHONE) 08 6216 2623

Changes: CHART TITLE, PBN SPECIFICATION BOX, Editorial.

PLMGN02-177