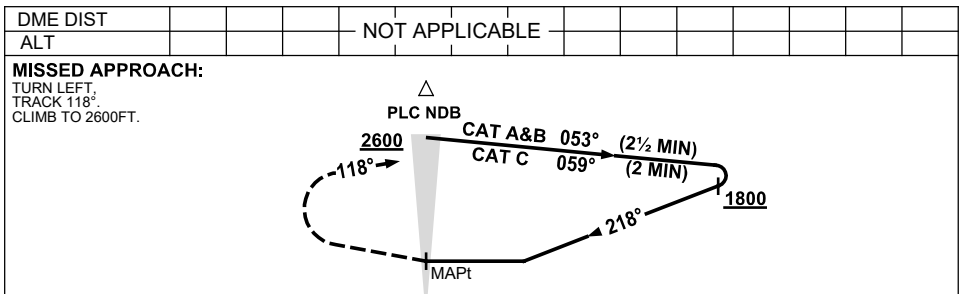
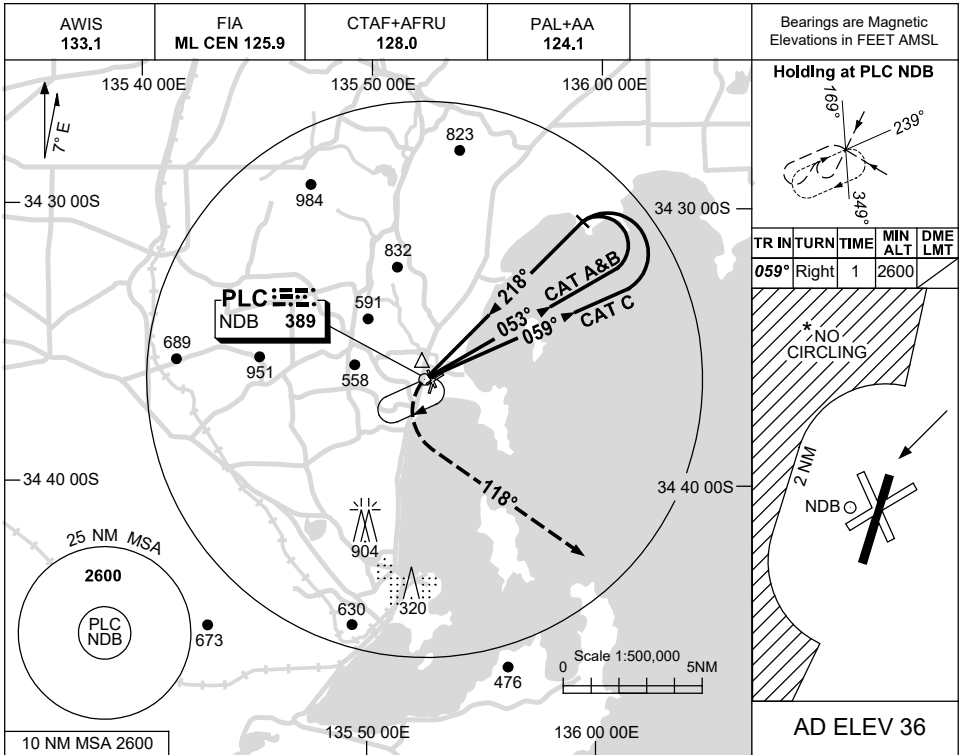


USE QNH

NDB-A

16 JUN 2022

PORT LINCOLN, SA (YPLC)



NOTES

CATEGORY	A	B	C	D
CIRCLING *	1040 (1004-2.4)		1210 (1174-4.0)	
ALTERNATE	(1504-4.4)		(1674-6.0)	

1. MAX IAS:
INITIAL :
CAT C 180KT.
- *2. NO CIRCLING WEST OF RWY 01/19 BEYOND 2NM.

Changes: PAL+AA.

PLCNB01-171