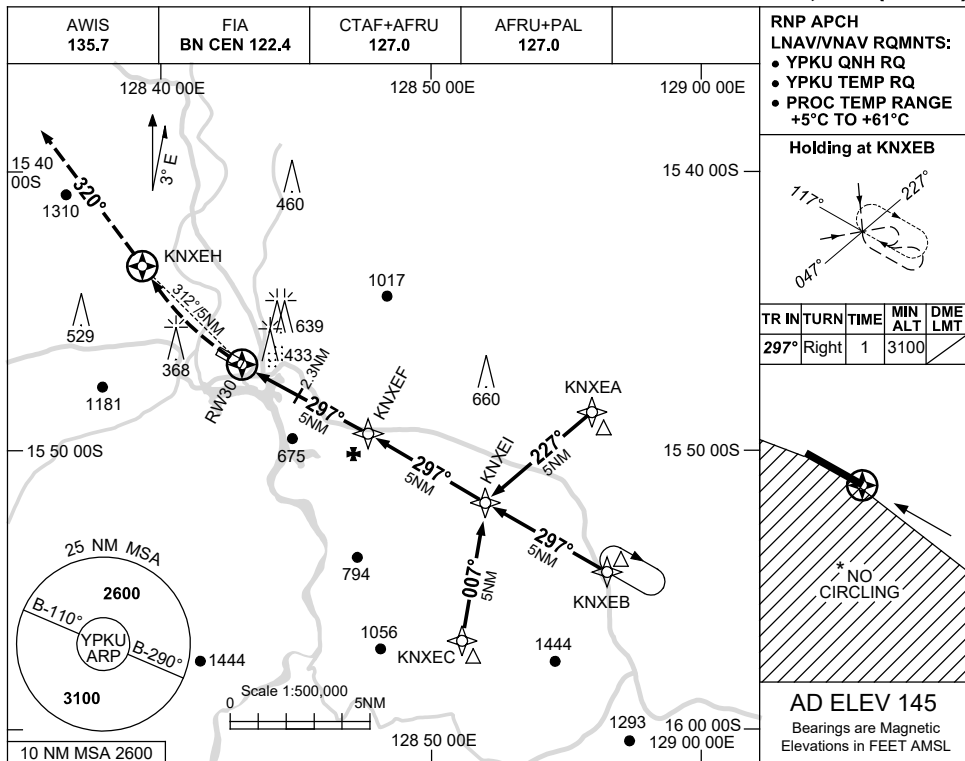


USE QNH

RNP RWY 30  
KUNUNURRA, WA (YPKU)

8 SEP 2022

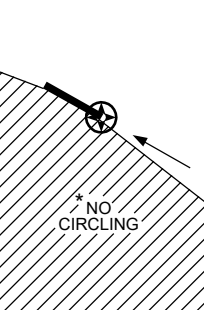


**RNP APCH  
LNAV/VNAV RQMNTS:**

- YPKU QNH RQ
- YPKU TEMP RQ
- PROC TEMP RANGE +5°C TO +61°C

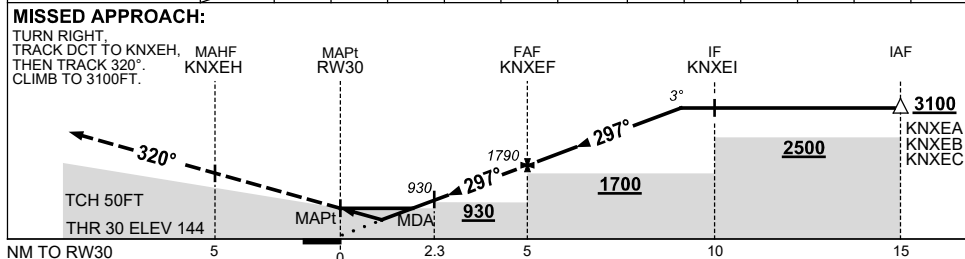
**Holding at KNXEB**

TR	IN	TURN	TIME	MIN ALT	DME LMT
297°	Right		1	3100	



**AD ELEV 145**  
Bearings are Magnetic  
Elevations in FEET AMSL

NM TO NEXT WPT	RW30	1.1	1.5	2.3	3	4	KNXEF	1	2	3	4.1		
ALT (3° APCH PATH)		540	680	930	1150	1470	1790	2110	2420	2740	3100		



NM TO RW30	5	0	2.3	5	10	15

**NOTES**

CATEGORY	A	B	C	D
LNAV/VNAV		540 (396-2.2)		
LNAV		680 (535-3.0)		
CIRCLING *	1190 (1045-2.4)		1350 (1205-4.0)	1350 (1205-5.0)
ALTERNATE	(1545-4.4)		(1705-6.0)	(1705-7.0)

- MAX IAS:  
INITIAL : 210KT.  
MAP TURN: 200KT.
- \* NO CIRCLING STH OF RWY 12/30.

Changes: CHART TITLE, PBN SPECIFICATION BOX.

PKUGN02-172