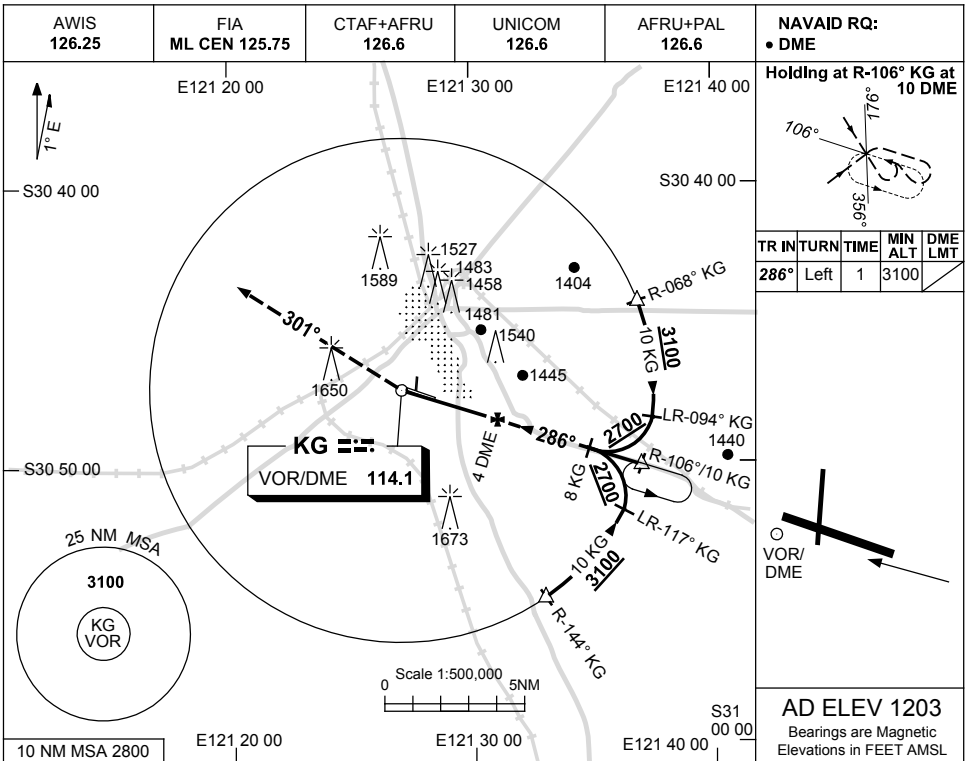


USE QNH

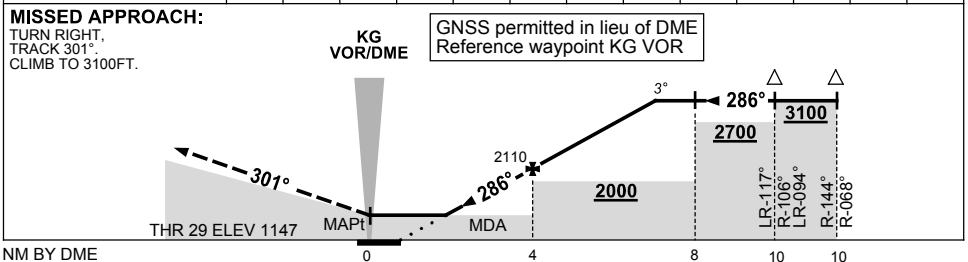
VOR-Z RWY 29

KALGOORLIE-BOULDER, WA (YPKG)

2 MAR 2017



DIST BY DME	2.9	3	4	5	6	7	7.1			
ALT (3° APCH PATH)	1770	1790	2110	2430	2740	3060	3100			



NOTES

CATEGORY	A	B	C	D
S-I VOR/DME	1770 (623-3.5)			
CIRCLING	2060 (857-2.4)		2160 (957-4.0)	2190 (987-5.0)
ALTERNATE	(1357-4.4)		(1457-6.0)	(1487-7.0)

1. MAX IAS:
INITIAL : 210KT.

CAUTION

1650FT RADIO MAST
2.5NM 280° KG
VOR/DME.

Changes: 1650FT TWR.

PKGVO03-150