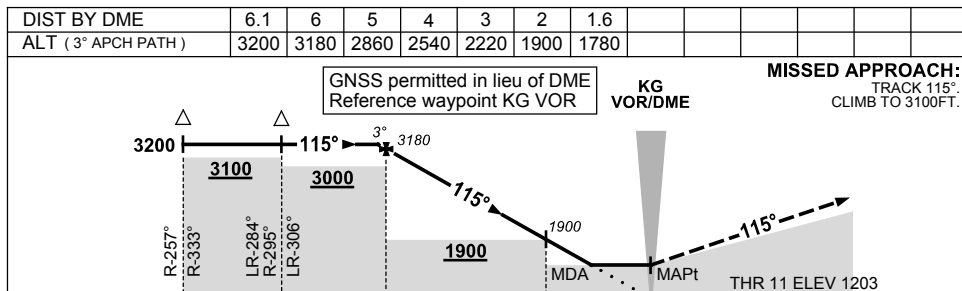
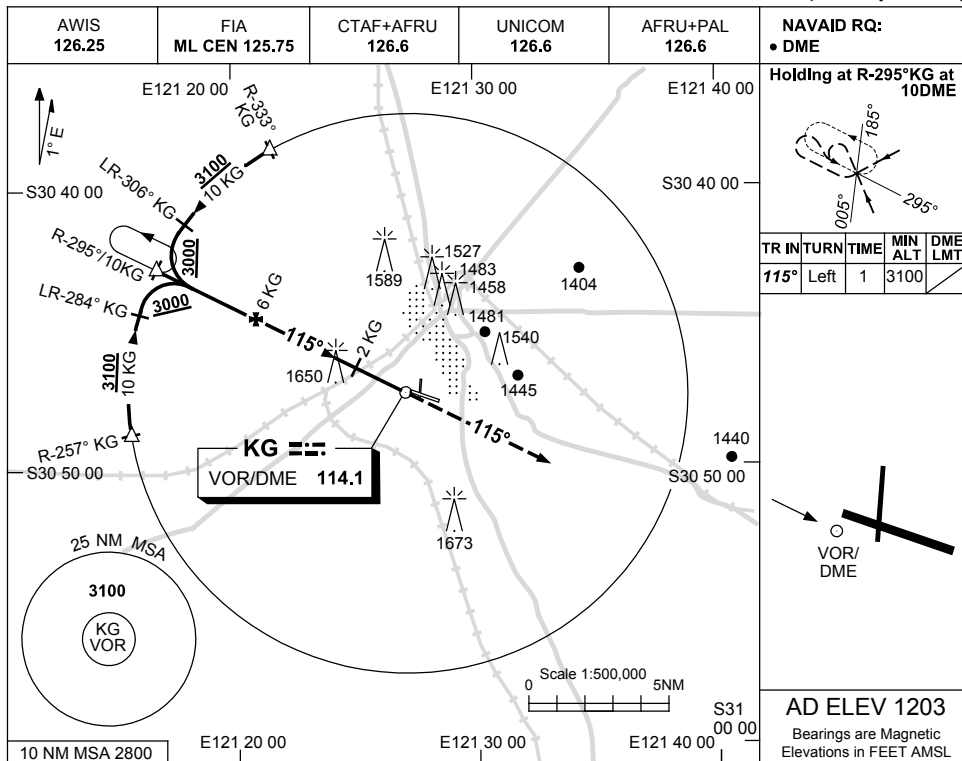


USE QNH

VOR-Z RWY 11

9 NOV 2017

KALGOORLIE-BOULDER, WA (YPKG)



CATEGORY	A	B	C	D
S-I VOR/DME	1780 (577-3.2)			
CIRCLING	2060 (857-2.4)	2160 (957-4.0)	2190 (987-5.0)	
ALTERNATE	(1357-4.4)	(1457-6.0)	(1487-7.0)	

NOTES

- MAX IAS:
INITIAL : 210KT.

CAUTION:
1650FT RADIO MAST
2.5NM 280° KG VOR/
DME ON RWY APCH
PATH.

Changes: IAF ALT.

PKGVO01-153