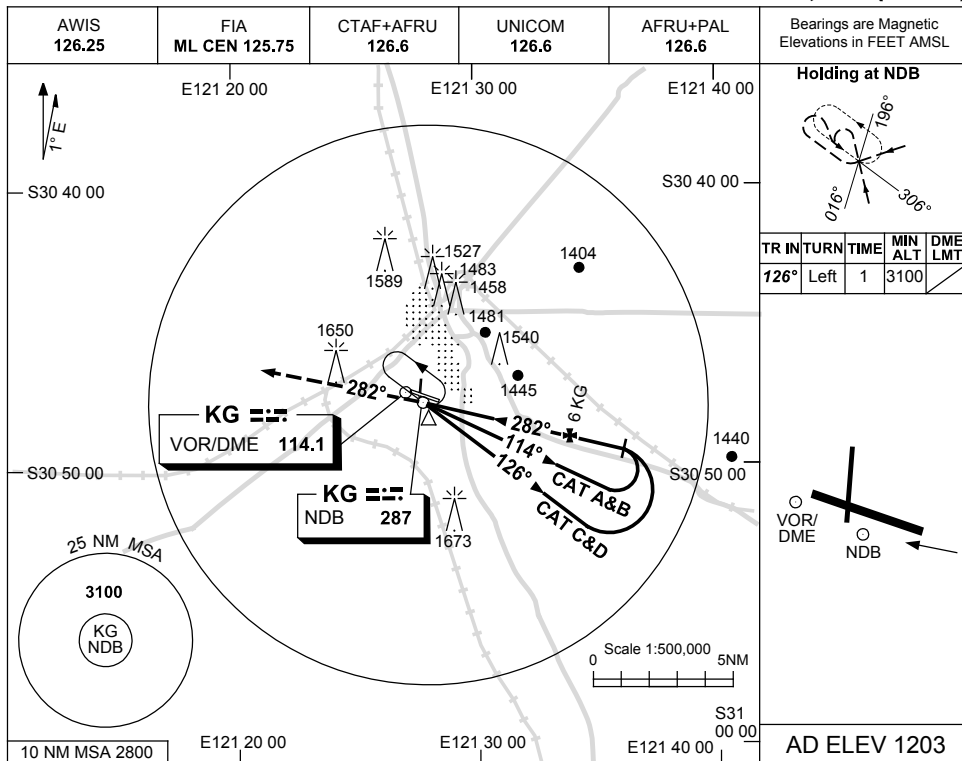


USE QNH

NDB RWY 29

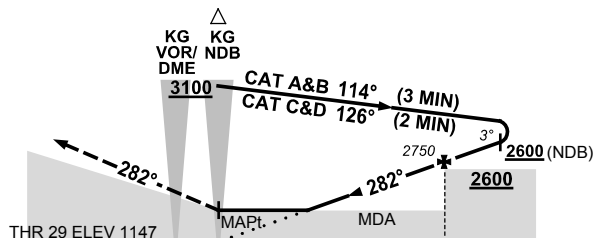
9 NOV 2017

KALGOORLIE-BOULDER, WA (YPKG)



DME DIST	3	3.5	4	5	6						
ALT (3° APCH PATH)	1800	1960	2110	2430	2750						

MISSED APPROACH:
TRACK 282°
CLIMB TO 3100FT.



NM BY DME	0	0	4.9
NM FM RWY 29			

NOTES

- MAX IAS:
INITIAL :
CAT A&B 140KT.
CAT C&D 210KT.
CAUTION:
1650FT RADIO MAST
2.5NM 280° KG
VOR/DME.

CATEGORY	A	B	C	D
S-I NDB		1960 (813-4.6)		
S-I NDB/DME		1800 (653-3.7)		
CIRCLING	2060 (857-2.4)		2160(957-4.0)	2190(987-5.0)
ALTERNATE	(1357-4.4)		(1457-6.0)	(1487-7.0)

Changes: REVISED PROC.

PKGNB01-153