

USE QNH

RNP U RWY 11 (AR)

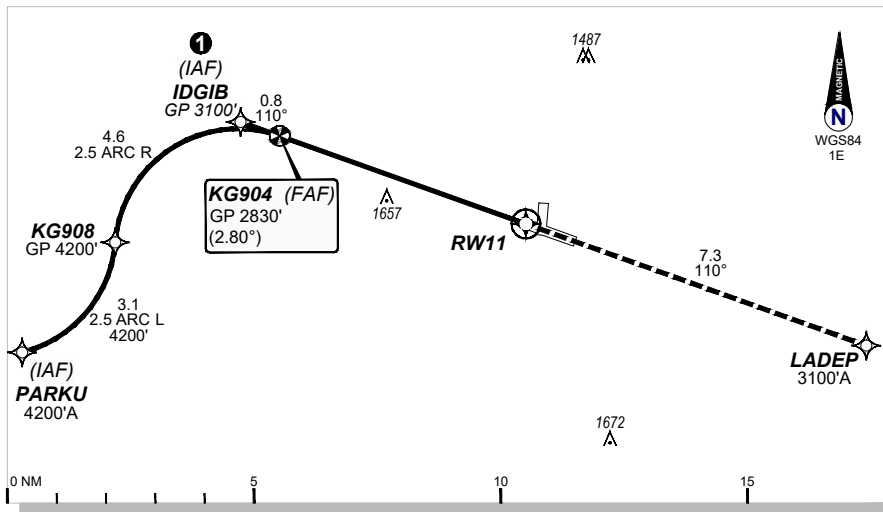
7 SEP 2023

KALGOORLIE-BOULDER (YPKG)

AWIS <b>126.25</b>	FIA <b>ML CEN 125.75</b>	CTAF + AFRU <b>126.6</b>	UNICOM <b>126.6</b>	AFRU + PAL <b>126.6</b>	RNP AR APCH -RF RQ -YPKG ACT QNH RQ -YPKG ACT TEMP RQ -PROCE TEMP RANGE -2°C TO +46°C
RNP AR <b>RNV U 11</b>	Apt Elev. <b>1203'</b> TDZE <b>1203'</b>	KG904 (FAF) <b>GP 2830' (2.80°)</b>	Trans Level <b>FL110</b>		

GE PROPRIETARY INFORMATION

① Latest position where the aircraft can join the procedure.

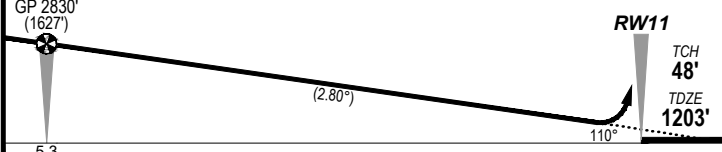


**MISSED APPROACH:**

Climb to 3100' via the RNP AR  
Missed Approach track to LADEP.



**KG904**  
GP 2830'  
(1627')



**NOTES:**

1. Minimum MAP gradient (AE) 3.5% to 3100 FT.

				RNP <b>0.30</b>
				DA(H) <b>1543'</b> (340')
C	C	C	C	<b>1900m</b>

**FOR CASA APPROVED OPERATORS ONLY**

202305171434COPYRIGHT 2023 NAVERUS, INC. USA

Changes: PROC NAME, RNAV (RNP) to RNP AR, Added PBN BOX, Removed Note 2, Removed background image.

PKGKN05-176

**DO NOT USE FOR NAVIGATION**

