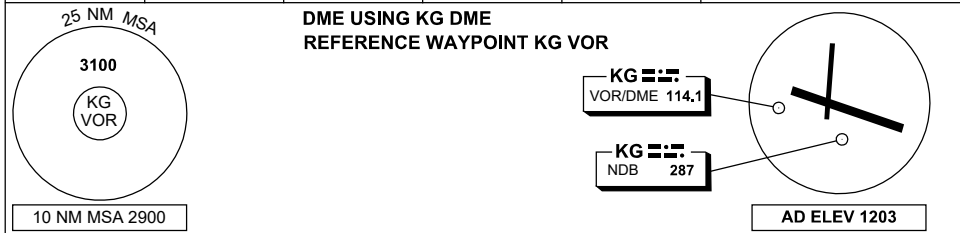


DME or GNSS ARRIVAL PROCEDURES KALGOORLIE-BOULDER, WA (YPKG)

28 NOV 2024

AWIS 126.25	FIA ML CEN 125.75	CTAF+AFRU 126.6	UNICOM 126.6	AFRU+PAL 126.6	Bearings are Magnetic Elevations in FEET AMSL
----------------	----------------------	--------------------	-----------------	-------------------	--



<p>ALL ROUTES TO KG VOR or NDB</p>						<p>MISSED APPROACH: CLIMB ON TRACK TO 3100FT.</p>	
	NM FM VOR	25	15	11	5	0	
CIRCLING MINIMA			A,B: 2310-2.4	C: 2310-4.0	D: 2310-5.0		
NM FM VOR	6	5	4	3.5			
ALT (3° APCH PATH)	3100	2800	2480	2310			