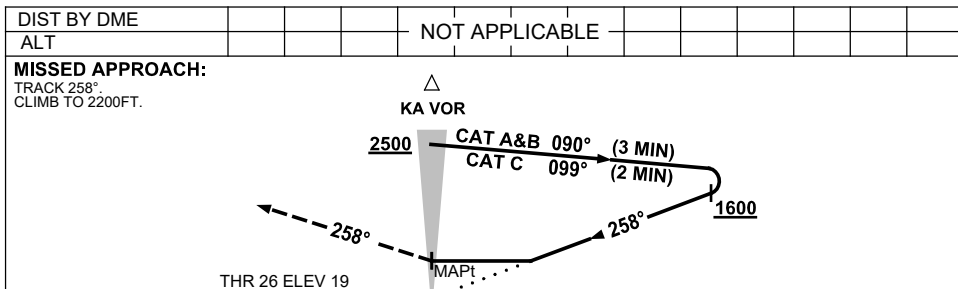
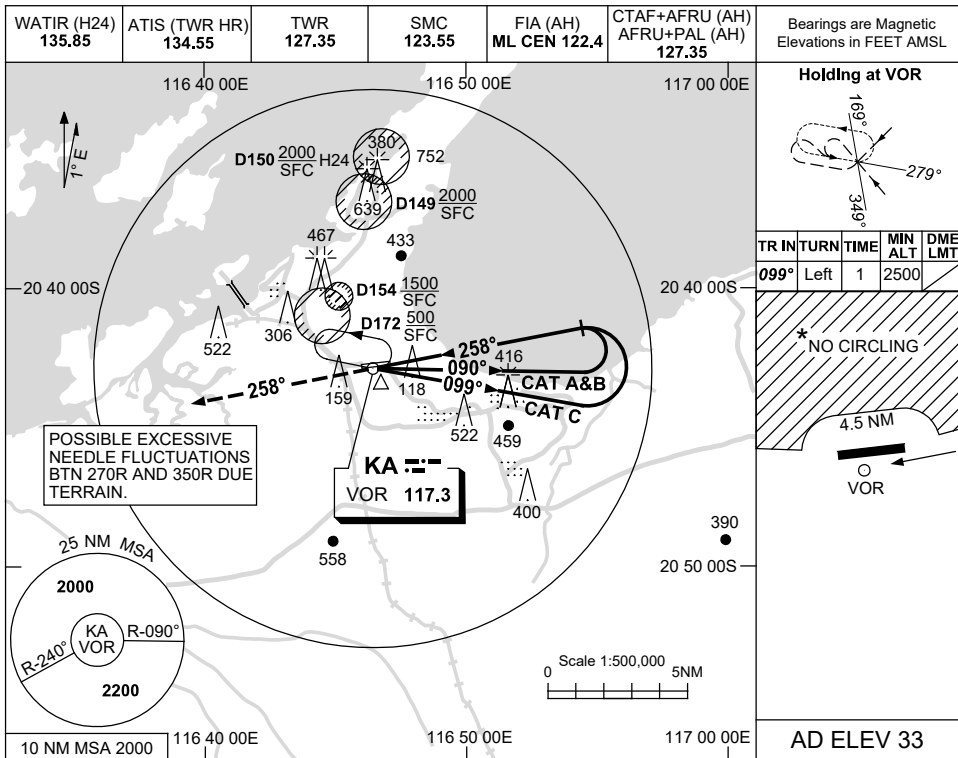


USE QNH

VOR-Y RWY 26

5 NOV 2020

KARRATHA, WA (YPKA)



**NOTES**

CATEGORY	A	B	C	D
S-I VOR	800 (787-4.4)			NOT APPLICABLE
CIRCLING *	860 (827-2.4)	1090 (1057-4.0)		
ALTERNATE	(1327-4.4)		(1557-6.0)	

\* 3. NO CIRCLING N OF RWY 08/26 BEYOND 4.5NM.

Changes: THR AND AD ELEV, GRID COORD FORMAT.

PKAV004-165