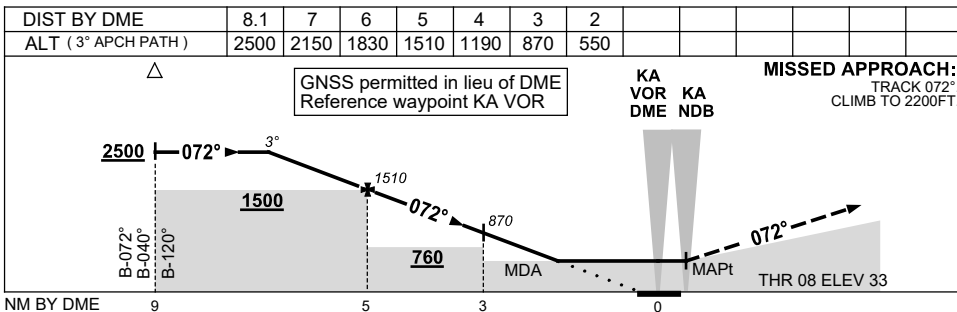
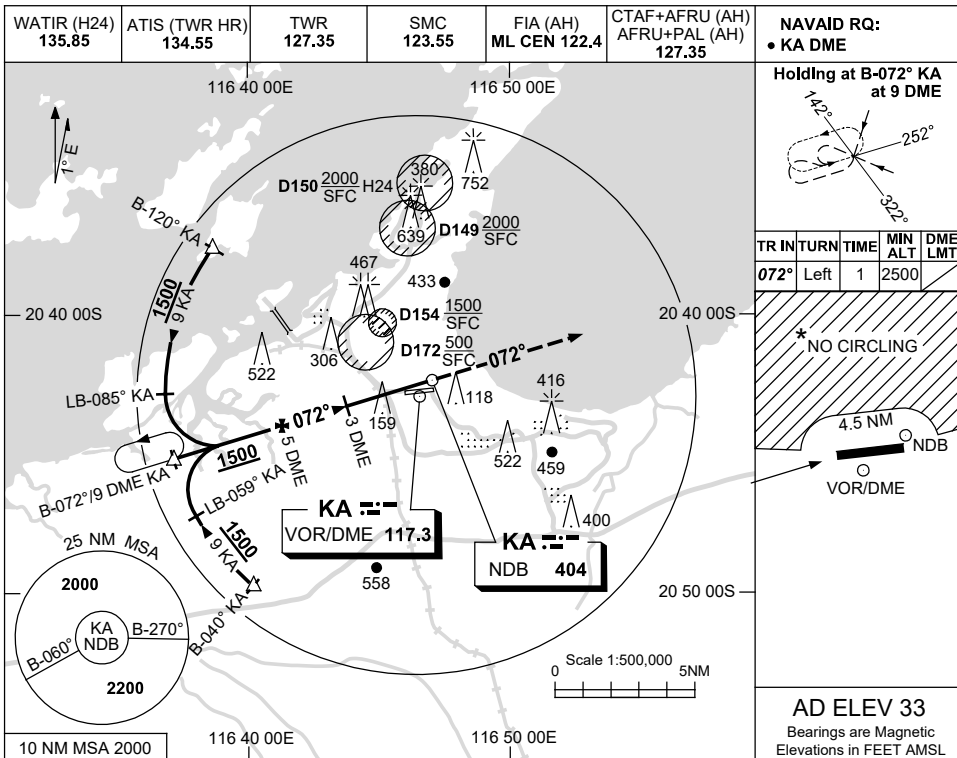


USE QNH

NDB-Z RWY 08

KARRATHA, WA (YPKA)

5 NOV 2020



CATEGORY	A	B	C	D
S-I NDB/DME	550 (517-2.9)			NOT APPLICABLE
CIRCLING *	860 (827-2.4)		1090 (1057-4.0)	
ALTERNATE	(1327-4.4)		(1557-6.0)	

- NOTES**
- MAX IAS: INITIAL : 210KT.
 - D154 MAYBE IN USE WITHOUT NOTAM PROMULGATION.
 - *3. NO CIRCLING N OF RWY 08/26 BEYOND 4.5NM.

Changes: THR AND AD ELEV, GRID COORD FORMAT.

PKANB01-165