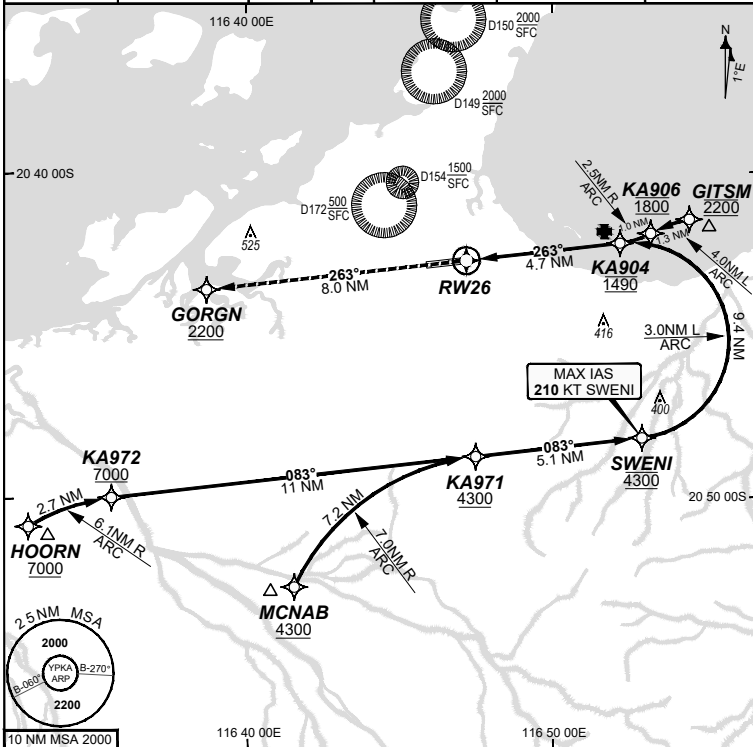


**FOR CASA APPROVED
OPERATORS ONLY**

30 NOV 2023

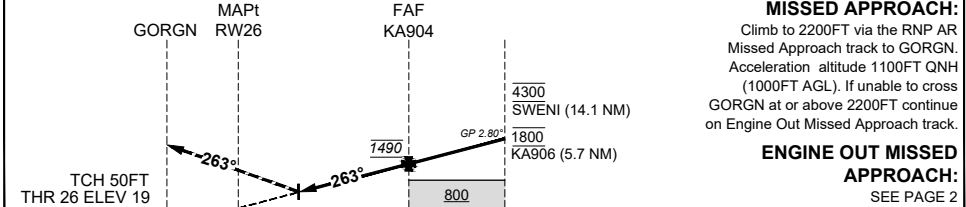
USE QNH

WATIR (H24) 135.85	ATIS (TWR HR) 134.55	TWR 127.35	SMC 123.55	FIA (AH) ML CEN 122.4	CTAF+AFRU (AH) AFRU+PAL (AH) 127.35	RNV U 26 THR ELEV 19	RNP AR APCH - RF RQ - YPKA ACT QNH RQ - YPKA ACT TEMP RQ - PROC TEMP RANGE +8°C TO +46°C
------------------------------	--------------------------------	----------------------	----------------------	---------------------------------	--	--------------------------------	---



Holding as directed by ATC				
TR IN	TURN	TIME	MIN ALT	DME LMT
AD ELEV 33 Bearings are Magnetic Elevations in FEET AMSL				

ALT (2.80° APCH PATH)	RW26	0.7	KA904	KA906	SWENI		
		269	1490	1800	4300		



ENGINE OUT MISSED APPROACH: SEE PAGE 2
NM FM THR

CATEGORY	A	B	C	D
RNP (0.30)	N/A		DA(H) 269 (250 - 1.3)	DA(H) 269 (250 - 1.3)
CIRCLING			NOT AUTHORISED	NOT AUTHORISED
ALTERNATE				

NOTES

1. Lateral transition to MAP must not be initiated prior to DA/H PSN.
2. APCH Path does not coincide with PAPI glide path 3°.
3. MIN MAP GRAD (AE) for RNP 0.30 4.0% to 2200 FT.

202308032315 COPYRIGHT 2023 GE DIGITAL. ALL RIGHTS RESERVED. GE PROPRIETARY INFORMATION

Changes: Chart reformatting, PROC NAME, RNAV (RNP) to RNP AR, APP Notes.

PKAGN04-177

DO NOT USE FOR NAVIGATION

