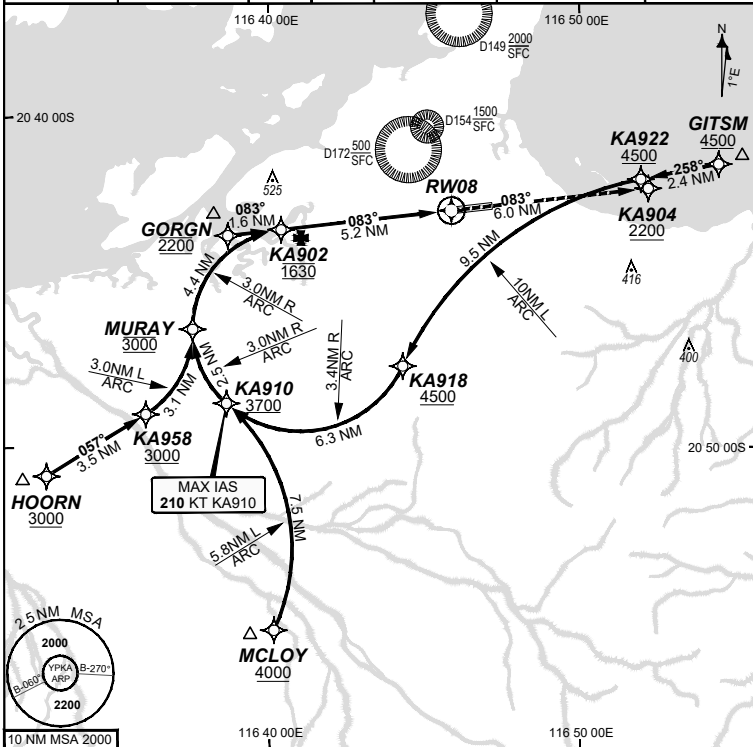


**FOR CASA APPROVED  
OPERATORS ONLY**

**30 NOV 2023**

**USE QNH**

WATIR (H24) <b>135.85</b>	ATIS (TWR HR) <b>134.55</b>	TWR <b>127.35</b>	SMC <b>123.55</b>	FIA (AH) <b>ML CEN 122.4</b>	CTAF+AFRU (AH) AFRU+PAL (AH) <b>127.35</b>	RNV U 08 <b>THR ELEV 33</b>	RNP AR APCH - RF RQ - YPKA ACT QNH RQ - YPKA ACT TEMP RQ - PROC TEMP RANGE <b>+8°C TO +46°C</b>
------------------------------	--------------------------------	----------------------	----------------------	---------------------------------	--	--------------------------------	--

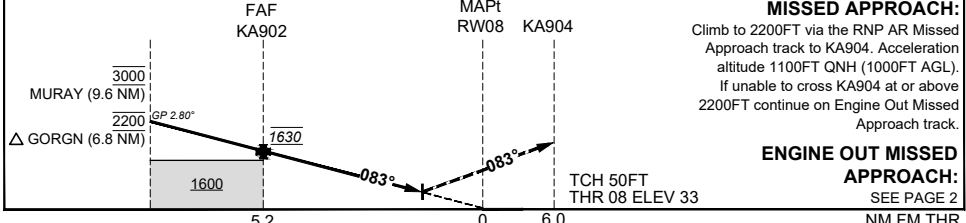


**Holding as directed  
by ATC**

TR	INT	TURN	TIME	MIN ALT	DME LMT

**AD ELEV 33**  
Bearings are Magnetic  
Elevations in FEET AMSL

10.NM MSA 2000	MURAY 3000	GORGN 2200	KA902 1630	0.7 297	RW08				
----------------	---------------	---------------	---------------	------------	------	--	--	--	--



**MISSED APPROACH:**  
Climb to 2200FT via the RNP AR Missed Approach track to KA904. Acceleration altitude 1100FT QNH (1000FT AGL). If unable to cross KA904 at or above 2200FT continue on Engine Out Missed Approach track.

**ENGINE OUT MISSED APPROACH:**  
SEE PAGE 2  
NM FM THR

CATEGORY	A	B	C	D
RNP (0.30)			DA(H) <b>297</b> (264 - 1.4)	DA(H) <b>297</b> (264 - 1.4)
CIRCLING	N/A		NOT AUTHORISED	NOT AUTHORISED
ALTERNATE				

- NOTES**
- Lateral transition to MAP must not be initiated prior to DA/H PSN.
  - APCH Path does not coincide with PAPI glide path 3°.
  - MIN MAP GRAD (AE) for RNP 0.30 5.1% to 2200 FT.

**DO NOT USE FOR NAVIGATION**  
Prepared by GE Aviation

