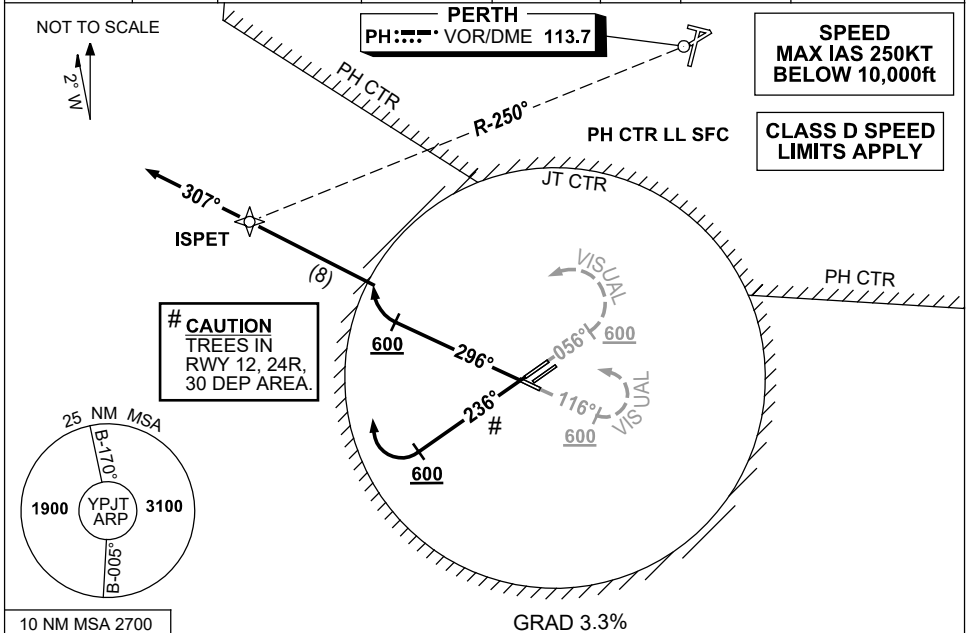


# STANDARD INSTRUMENT DEPARTURES (SID) ISPET ONE DEP - RUNWAYS WEST PERTH/JANDAKOT, WA (YPJT)

15 JUN 2023

ATIS (AWIS AH) 128.65 281	SMC 124.3	TWR (CTAF+AFRU AH) 118.1	FIA PH CEN 135.25	APP (PH) 123.6 132.95	DEP (PH) 118.7	PAL+AA (AH) 123.9	Bearings are Magnetic. Elevations in FEET AMSL
------------------------------	--------------	--------------------------------	----------------------	--------------------------	-------------------	----------------------	---



**ISPET ONE DEPARTURE**  
PROC NOT AVBL FROM RWY 06R/24L

## RWY 06L (VISUAL) (RNAV)

- Track 056°
- After passing 600ft turn LEFT visually to intercept and track 307° to ISPET
- Continue tracking 307° thence as cleared.

## RWY 12 (VISUAL) (RNAV)

- Track 116°
- After passing 600ft turn LEFT visually to intercept and track 307° to ISPET
- Continue tracking 307° thence as cleared.

## REQUIREMENTS RWY 06L, RWY 12:

- Minimum Cloud Base 700ft
- ACFT must remain VISUAL within Jandakot CTR (3NM from ARP) until the end of initial turn.
- Visual segment terminated when established on track to intercept 307° to ISPET.
- Cross JT CTR boundary AT or ABV 700ft

## RWY 24R (RNAV)

- Track 236°
- After passing 600ft turn RIGHT to intercept and track 307° to ISPET
- Continue tracking 307° thence as cleared.

## RWY 30 (RNAV)

- Track 296°
- After passing 600ft turn RIGHT to intercept and track 307° to ISPET
- Continue tracking 307° thence as cleared.

## COMMUNICATIONS FAILURE PROCEDURE

On recognition of communications failure

- Squawk 7600
- Maintain procedure track for two minutes, and
- CLIMB IF NECESSARY TO MINIMUM SAFE ALTITUDE, to maintain terrain clearance, then
- Proceed in accordance with the latest ATC route clearance acknowledged.

Changes: CHART TITLE, WPT ISPET.

PJTDP02-175