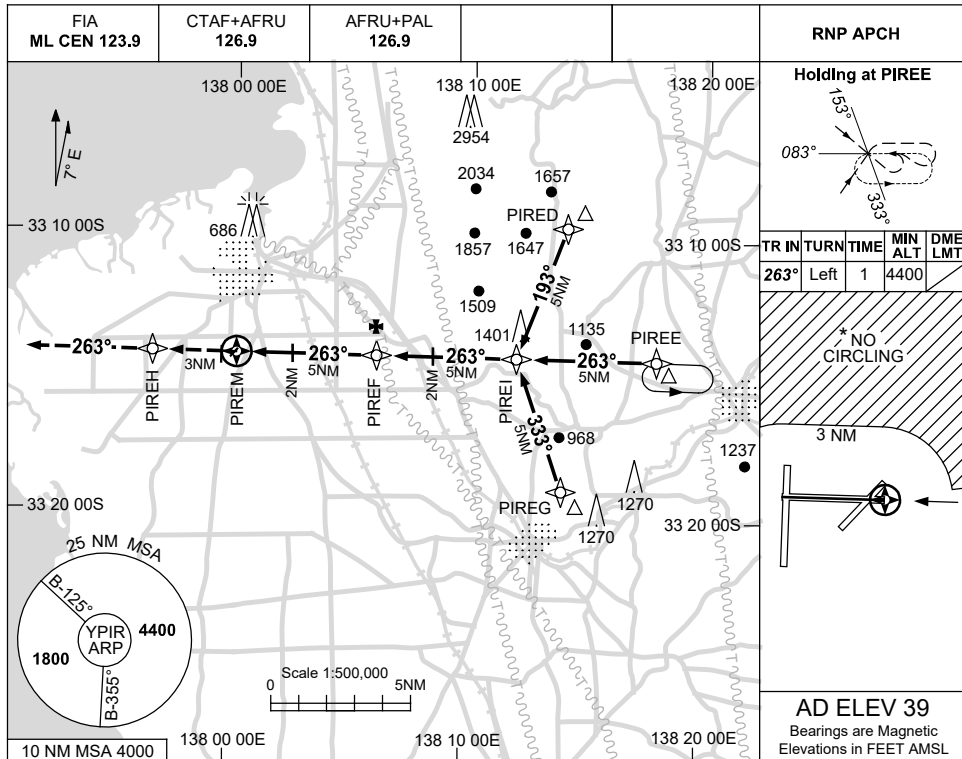


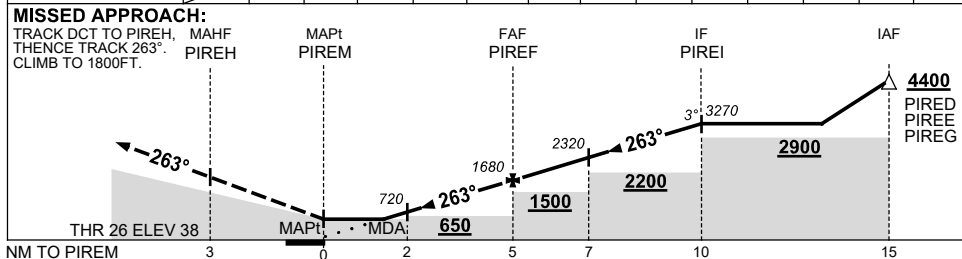
USE QNH

RNP RWY 26  
PORT PIRIE, SA (YPIR)

7 SEP 2023



NM TO NEXT WPT	PIREM	1.5	2	3	4	PIREF	1	2	3	4	PIREI		
ALT (3° APCH PATH)		550	720	1040	1360	1680	2000	2320	2640	2950	3270		



**NOTES**

CATEGORY	A	B	C	D
LNAV	550 (511-2.9)			NOT APPLICABLE
CIRCLING *	660 (621-2.4)	830 (791-4.0)		
ALTERNATE	(1121-4.4)		(1291-6.0)	

- 1. MAX IAS: INITIAL : 210KT.
- \* 2. NO CIRCLING N OF RWY 08/26 BEYOND 3NM.

Changes: AFRU+PAL FREQ.

PIRGN02-176