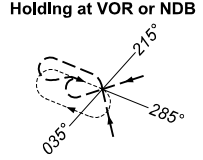
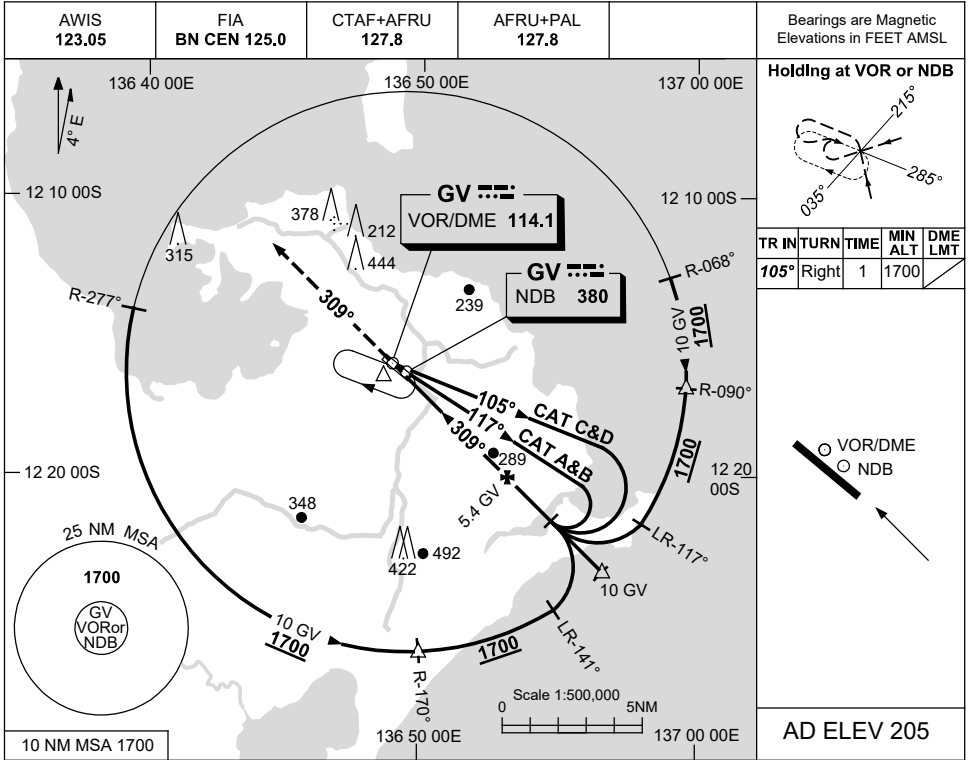


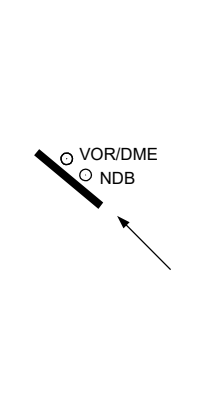
USE QNH

NDB or VOR RWY 31
GOVE, NT (YPGV)

15 JUN 2023

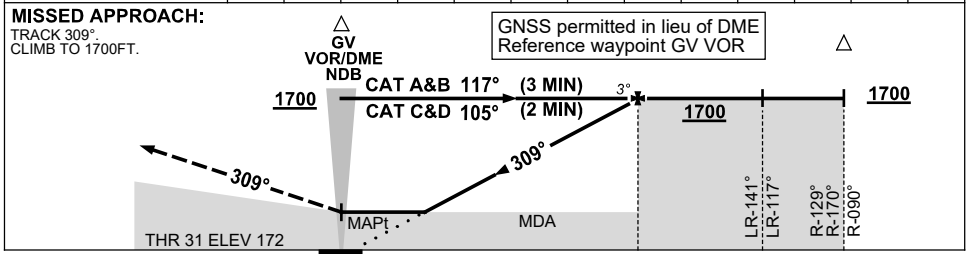


TR	IN	TURN	TIME	MIN ALT	DME LMT
105°	Right		1	1700	



AD ELEV 205

DIST BY DME	2.6	2.8	3	4	5	5.4							
ALT (3° APCH PATH)	800	840	920	1230	1550	1700							



NM BY DME	0	5.4	10	10
-----------	---	-----	----	----

NOTES

CATEGORY	A	B	C	D
S-I VOR or NDB		840 (668-3.8)		
S-I WITH DME		800 (628-3.6)		
CIRCLING	840 (635-2.4)	940 (735-4.0)	1010 (805-5.0)	
ALTERNATE	(1135-4.4)	(1235-6.0)	(1305-7.0)	

1. MAX IAS:
INITIAL : 210KT.

Changes: THR ELEV, Editorial.

PGVNB02-175