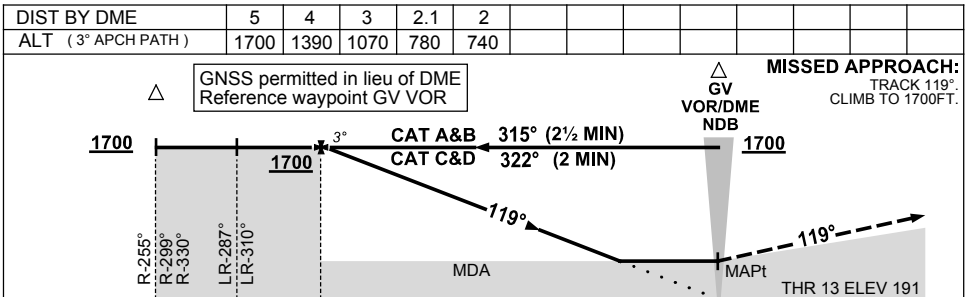
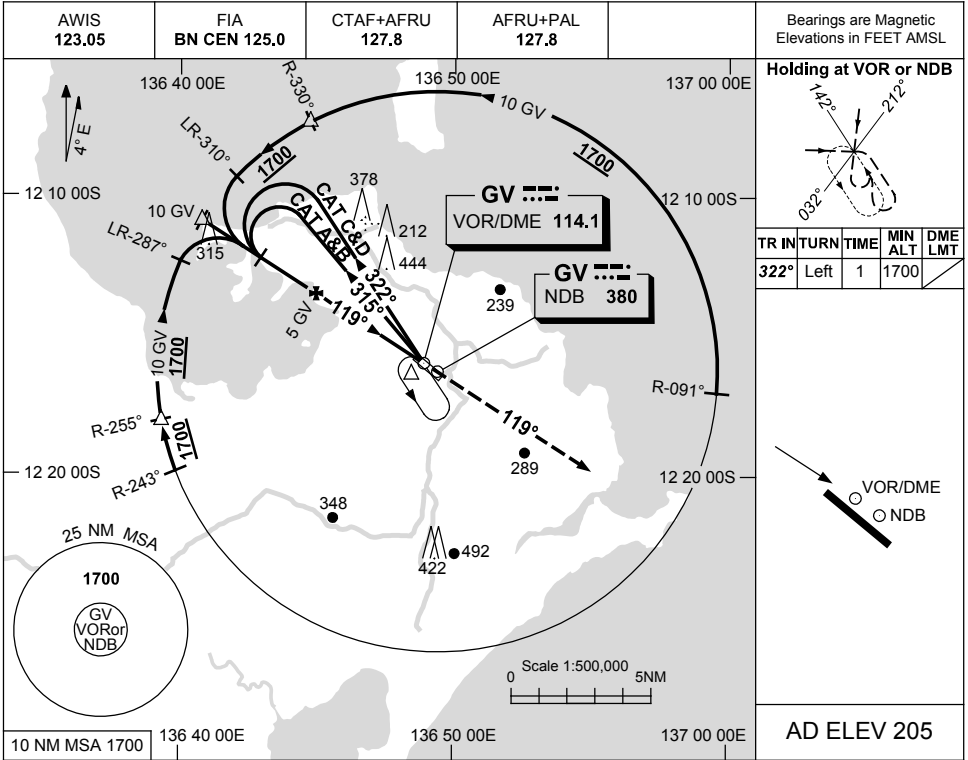


USE QNH

NDB or VOR RWY 13
GOVE, NT (YPGV)

15 JUN 2023



CATEGORY	A	B	C	D
S-I VOR or NDB		780 (589-3.3)		
S-I WITH DME		740 (549-3.1)		
CIRCLING	840 (635-2.4)		940 (735-4.0)	1010 (805-5.0)
ALTERNATE	(1135-4.4)		(1235-6.0)	(1305-7.0)

NOTES
1. MAX IAS:
INITIAL : 210KT.

Changes: THR ELEV, Editorial.

PGVNB01-175