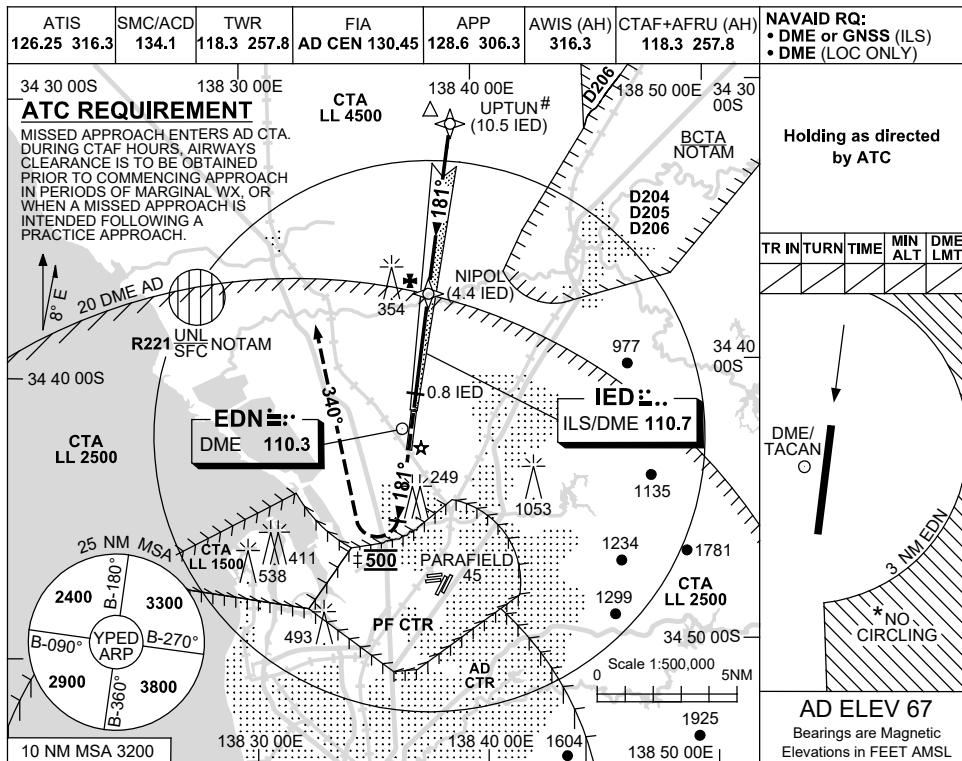


USE QNH

ILS-Z or LOC-Z RWY 18  
**EDINBURGH, SA (YPED)**

21 MAR 2024



**Holding as directed by ATC**

TR IN	TURN	TIME	MIN ALT	DME LMT

DME/TACAN

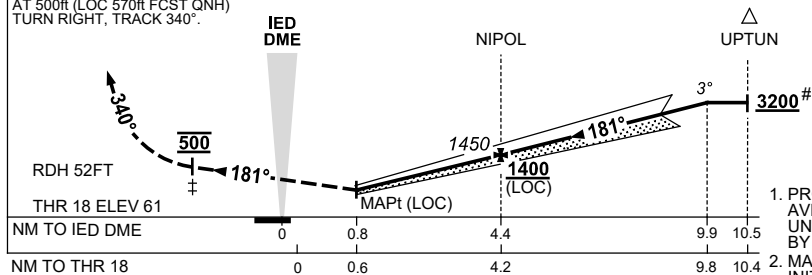
3 NM EDN

**AD ELEV 67**  
 Bearings are Magnetic  
 Elevations in FEET AMSL

NM TO IED DME	1.6	2	3	4	NIPOL	5	6	7	8	9	9.9		
ALT (3° APCH PATH)	570	690	1010	1330	1450	1650	1970	2280	2600	2920	3200		

**MISSED APPROACH:**

TRACK 181°, CLIMB TO 3200ft.  
 AT 500ft (LOC 570ft FCST QNH)  
 TURN RIGHT, TRACK 340°.



- NOTES**
- PROCEDURE NOT AVBL WHEN R221 ACT UNLESS AUTHORISED BY ATC.
  - MAX IAS:  
 INITIAL : 210KT.  
 MISSED APPROACH : 180KT.
  - NO CIRCLING E OF RWY 18/36 BEYOND 3NM EDN.
  - ACFT MAY BE RADAR VECTORED TO IAF (UPTUN) AT 3200ft.
- ±5. 570ft (LOC FCST QNH).

CATEGORY	A	B	C	D
S-I ILS		380 (319)	1.0	
S-I LOC #		570 (503-2.1)		
CIRCLING *	800 (733-2.4)		850 (783-4.0)	890 (823-5.0)
ALTERNATE	(1233-4.4)		(1283-6.0)	(1323-7.0)

Changes: VISIBILITY, Editorial.

PEDI101-178