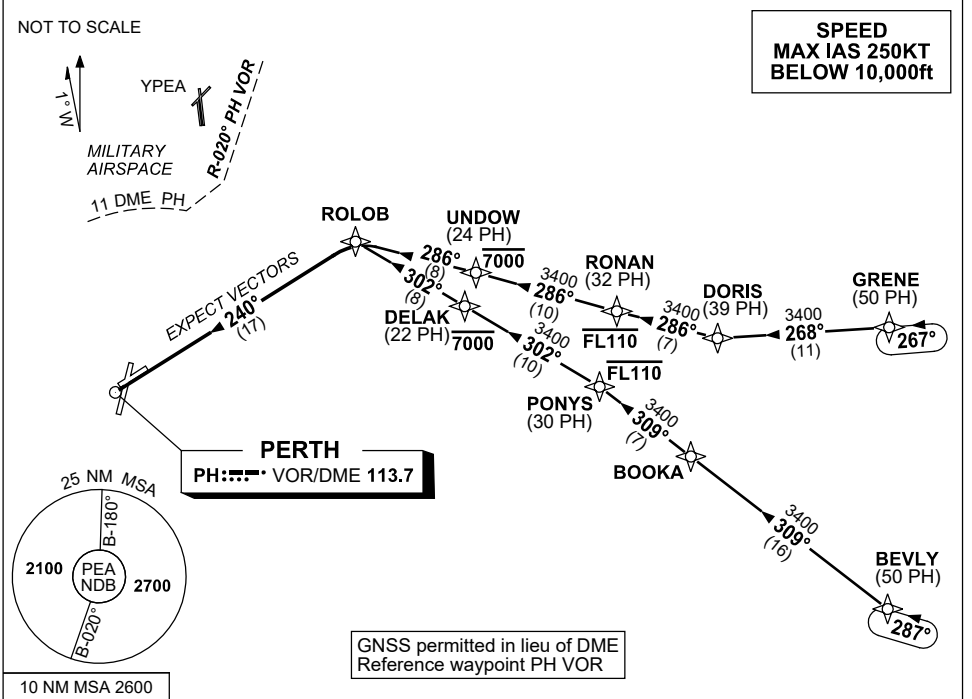


**STANDARD INSTRUMENT ARRIVAL (STAR)  
PEARCE THREE ROMEO ARRIVAL (RNAV)  
PEARCE, WA (YPEA)**

**21 MAR 2024**

|                            |                               |                         |                    |                           |                         |                    |  |
|----------------------------|-------------------------------|-------------------------|--------------------|---------------------------|-------------------------|--------------------|--|
| ATIS<br>340 136.4<br>316.1 | DEP<br>PEA CEN<br>123.3 135.9 | APP<br>PEA APP<br>130.2 | TWR<br>118.3 257.8 | FIA (AH)<br>PH CEN 135.25 | CTAF+AFRU (AH)<br>118.3 | AWIS (AH)<br>316.1 | Bearings are Magnetic<br>Elevations in FEET AMSL |
|----------------------------|-------------------------------|-------------------------|--------------------|---------------------------|-------------------------|--------------------|--|



**TRANSITIONS:**

- GRENE:**
- From GRENE, track 268° to DORIS, (NON-JET)
  - Turn RIGHT, track 286° to RONAN, **Cross** RONAN AT or BLW FL110,
  - Track 286° to UNDOU, **Cross** UNDOU AT or BLW 7000ft,
  - Track 286° to ROLOB, Then follow ARRIVAL instructions

- BEVLY:**
- From BEVLY, track 309° to BOOKA, (JET)
  - Track 309° to PONYNS, **Cross** PONYNS AT or BLW FL110,
  - Turn LEFT, track 302° to DELAK, **Cross** DELAK AT or BLW 7000ft,
  - Track 302° to ROLOB, Then follow ARRIVAL instructions

**ARRIVAL: PEARCE THREE ROMEO**

- From ROLOB turn LEFT
- Track 240° to PH VOR
- Expect radar vectors to YPEA

**COMMUNICATIONS FAILURE: PROCEDURE IN IMC**

- Squawk 7600, comply with vertical navigation requirements, but not below MSA.
- Track via the latest STAR clearance to the nominated runway, then fly the most suitable approach in accordance with ERSA EMERG Section 1.5.

Changes: Editorial.

PEASR03-178