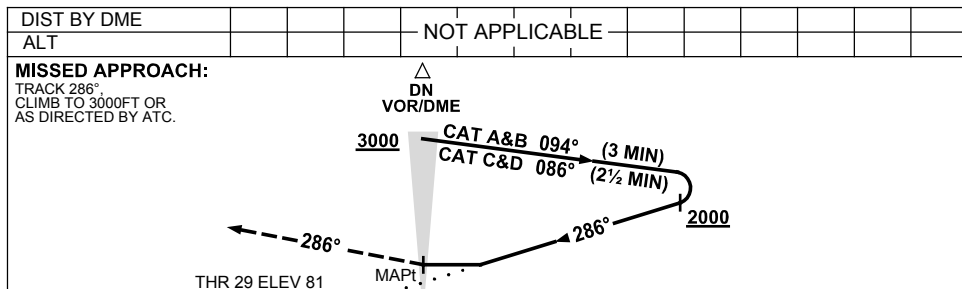
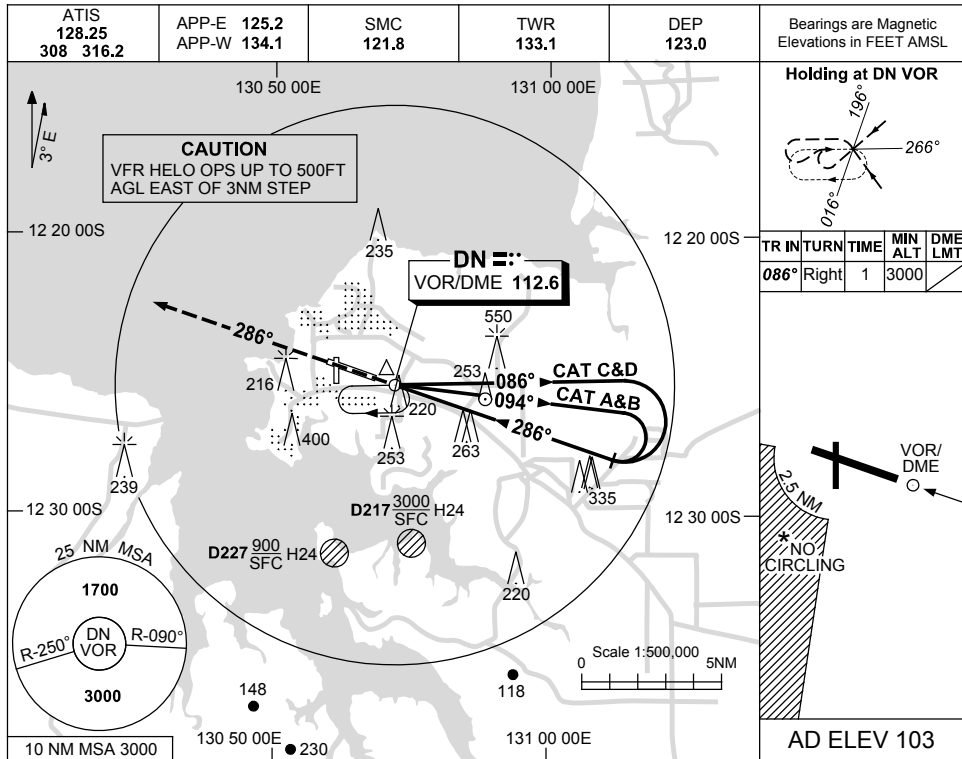


USE QNH

VOR-Y RWY 29
DARWIN, NT (YPDN)

23 MAR 2023



NOTES

CATEGORY	A	B	C	D
S-I VOR	1100 (1019-4.9)			
CIRCLING *	1100 (997-2.4)	1100 (997-4.0)		1100 (997-5.0)
ALTERNATE	(1497-4.4)	(1497-6.0)		(1497-7.0)

1. MAX IAS:
 INITIAL: CAT C/D 210KT
 2. ACFT MAY BE RADAR VECTORED TO FINAL.
 *3. NO CIRCLING IN SECTOR SW OF RWY 11/29 AND RWY 18/36 BEYOND 2.5NM.

Changes: VIS MINIMA.

PDNVO02-174