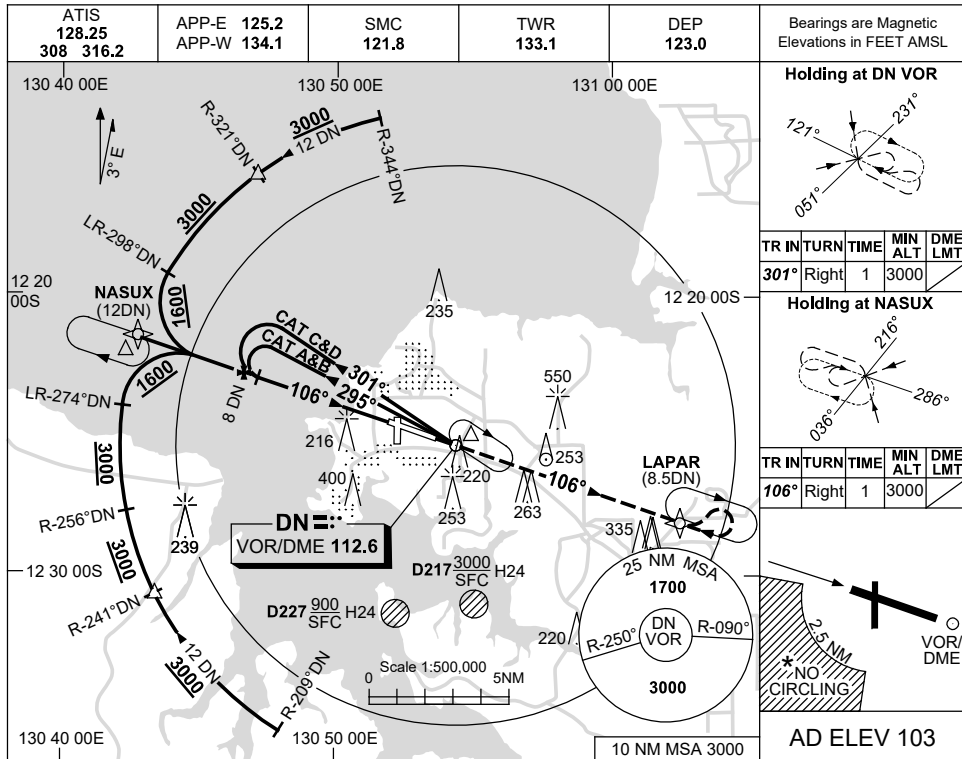


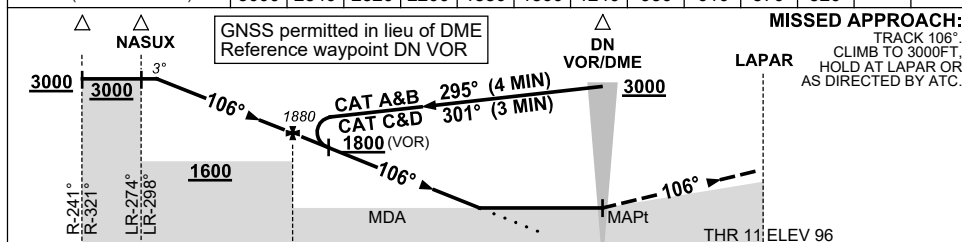
USE QNH

VOR-Z RWY 11
DARWIN, NT (YPDN)

1 DEC 2022



| | | | | | | | | | | | | | |
|--------------------|------|------|------|------|------|------|------|-----|-----|-----|-----|--|--|
| DIST TO DN DME | 11.5 | 11 | 10 | 9 | 8 | 7 | 6 | 5 | 4 | 3.9 | 3.7 | | |
| ALT (3° APCH PATH) | 3000 | 2840 | 2520 | 2200 | 1880 | 1560 | 1240 | 930 | 610 | 570 | 520 | | |



NM TO 12 12 8 0 8.5
 DN DME

NOTES

- MAX IAS: INITIAL : 210KT.
- ACFT MAY BE RADAR VECTORED TO FINAL.
- DME 41X(110.4) NOT TO BE USED WITH THIS PROCEDURE.
- SPECIAL ALTN MNM 800/4 KM.
- NO CIRCLING IN SECTOR SW OF RWY 11/29 AND RWY 18/36 BEYOND 2.5NM.

| CATEGORY | A | B | C | D |
|-------------|---------------|---------------|---------------|----------------|
| S-I VOR | | 570 (467-2.6) | | |
| S-I VOR/DME | | 520 (417-2.3) | | |
| CIRCLING * | 700 (597-2.4) | | 800 (697-4.0) | 1000 (897-5.0) |
| ALTERNATE * | (1097-4.4) | | (1197-6.0) | (1397-7.0) |

Changes: MAG VAR AND NOTE 3.

PDNVO01-173