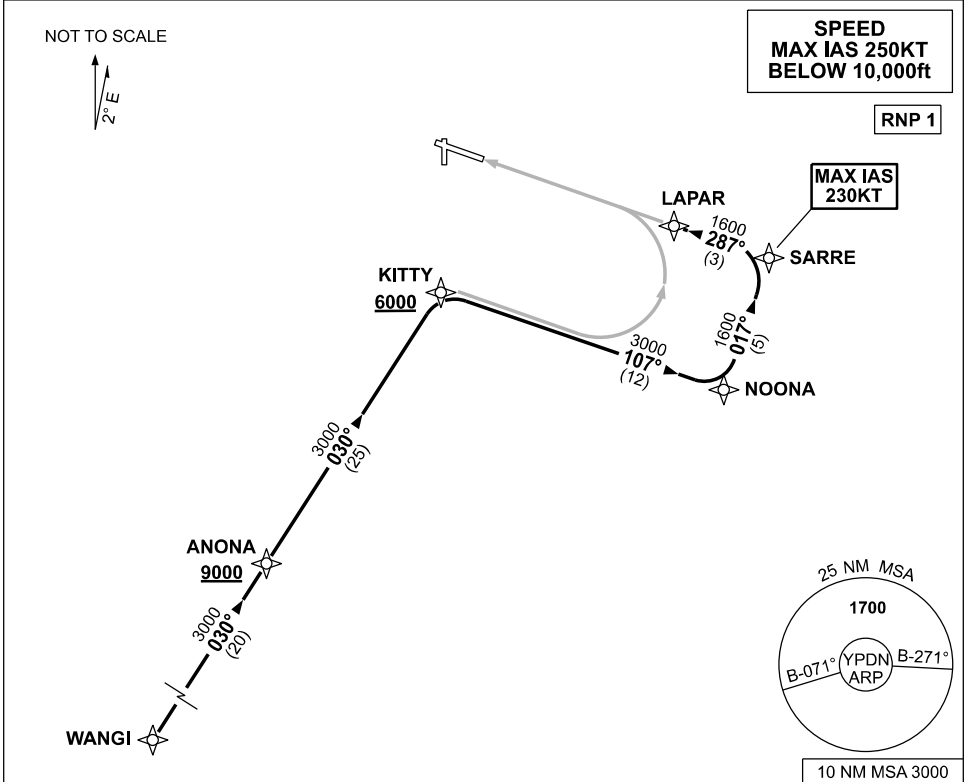


**STANDARD INSTRUMENT ARRIVAL (STAR)  
WANGI FIVE WHISKEY, X-RAY ARRIVALS (RNAV) RWY 29  
DARWIN, NT (YPDN)**

**19 MAR 2026**

ATIS 128.25 308 316.2	APP-E 125.2 APP-W 134.1	TWR 133.1	SMC 121.8		Bearings are Magnetic Elevations in FEET AMSL
-----------------------------	----------------------------	--------------	--------------	--	--



**ARRIVAL: WANGI FIVE**

**RWY 29 WHISKEY:**

- From WANGI track 030° to ANONA  
**Cross** ANONA AT or ABV 9000ft
- Track 030° to KITTY for RNP W (AR)  
or RNP S (AR) RWY 29 approach  
**Cross** KITTY AT or ABV 6000ft

**RWY 29 X-RAY:**

- From WANGI track 030° to ANONA  
**Cross** ANONA AT or ABV 9000ft
- Track 030° to KITTY  
**Cross** KITTY AT or ABV 6000ft
- Turn RIGHT track 107° to NOONA
- Turn LEFT track 017° to SARRE  
MAX IAS 230KT from SARRE
- Turn LEFT track 287° to LAPAR for  
RNP X (AR) or RNP Y (AR) RWY 29  
approach

**COMMUNICATIONS FAILURE: PROCEDURE IN IMC**

- Squawk 7600, comply with vertical navigation requirements, but not below MSA.
- Track via the latest STAR clearance to the nominated runway, then fly the most suitable approach in accordance with ERSA EMERG Section 1.5.

Changes: MAG VAR, MSA REFERENCE, Editorial.

PDNSR09-186