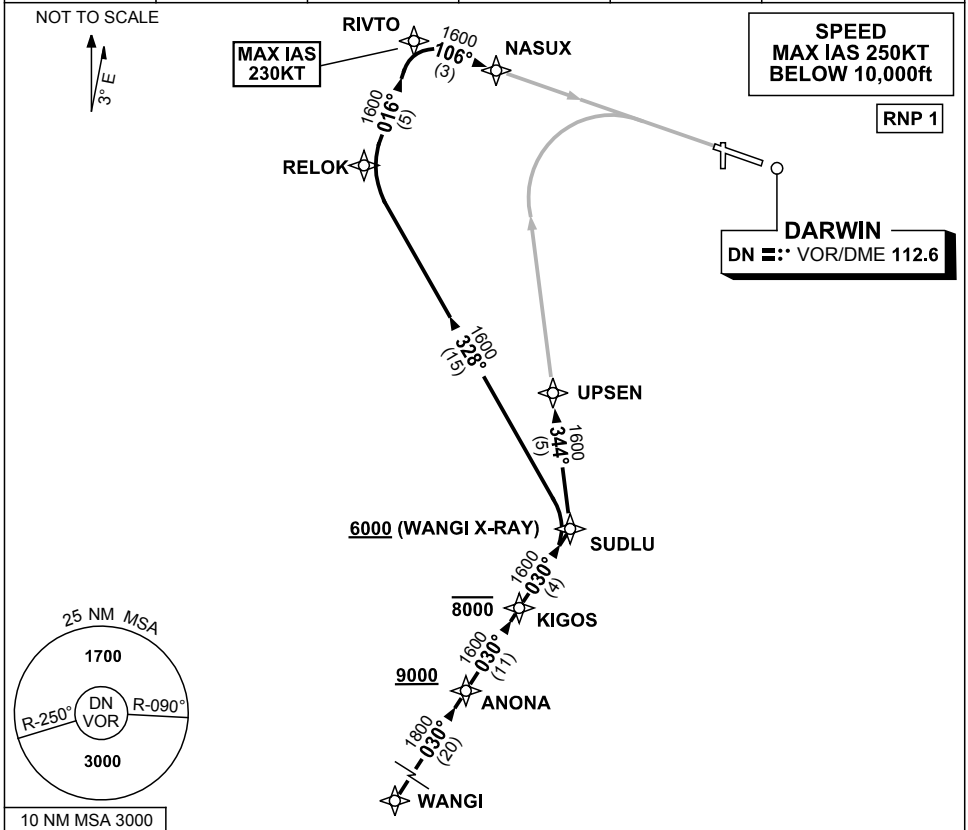


**STANDARD INSTRUMENT ARRIVAL (STAR)
WANGI FIVE WHISKEY, X-RAY ARRIVALS (RNAV) RWY 11
DARWIN, NT (YPDN)**

20 MAR 2025

ATIS 128.25 308 316.2	APP-E 125.2 APP-W 134.1	TWR 133.1	SMC 121.8		Bearings are Magnetic Elevations in FEET AMSL
-----------------------------	----------------------------	--------------	--------------	--	--



ARRIVAL: WANGI FIVE

RWY 11 WHISKEY:

- From WANGI track 030° to ANONA
Cross ANONA AT or ABV 9000ft
- Track 030° to KIGOS
Cross KIGOS AT or BLW 8000ft
- Track 030° to SUDLU
- Turn LEFT, track 344° to UPSEN for
RNP W (AR) or RNP S (AR) RWY 11
approach

RWY 11 X-RAY:

- From WANGI track 030° to ANONA
Cross ANONA AT or ABV 9000ft
- Track 030° to KIGOS
Cross KIGOS AT or BLW 8000ft
- Track 030° to SUDLU
Cross SUDLU AT or ABV 6000ft
- Turn LEFT, track 328° to RELOK
- Turn RIGHT track 016° to RIVTO,
MAX IAS 230KT from RIVTO
- Turn RIGHT track 106° to NASUX for
RNP X (AR) or RNP Y (AR) RWY 11
approach

COMMUNICATIONS FAILURE: PROCEDURE IN IMC

- Squawk 7600, comply with vertical navigation requirements, but not below MSA.
- Track via the latest STAR clearance to the nominated runway, then fly the most suitable approach in accordance with ERSA EMERG Section 1.5.

Changes: VALIDITY INDICATOR.

PDNSR08-182