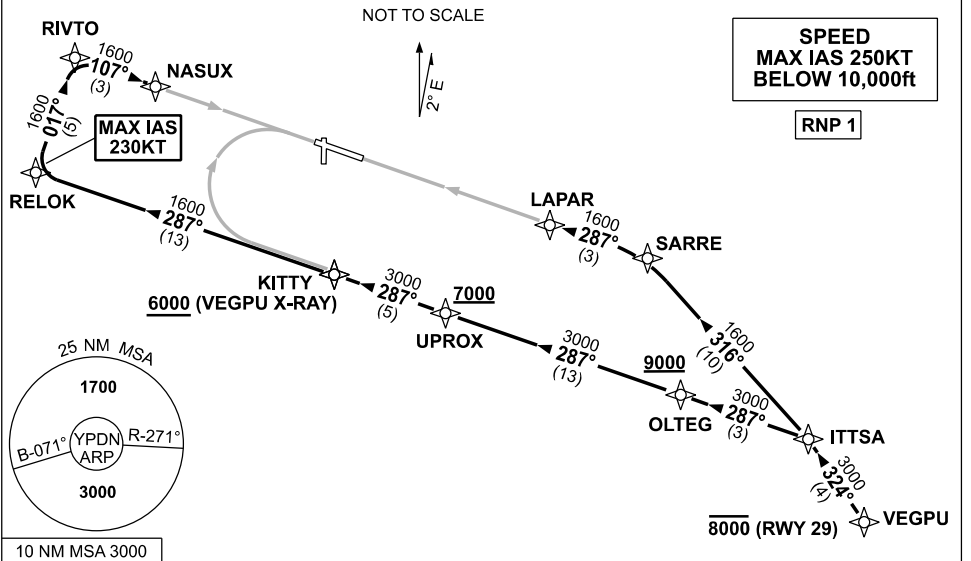


**STANDARD INSTRUMENT ARRIVAL (STAR)
VEGPU ONE WHISKEY, X-RAY ARRIVAL (RNAV)
DARWIN, NT (YPDN)**

19 MAR 2026

ATIS 128.25 308 316.2	APP-E 125.2 APP-W 134.1	TWR 133.1	SMC 121.8		Bearings are Magnetic Elevations in FEET AMSL
-----------------------------	----------------------------	--------------	--------------	--	--



ARRIVAL: VEGPU ONE

RWY 11 WHISKEY:

- From VEGPU track 324° to ITTSA
- Turn LEFT track 287° to OLTEG
 Cross OLTEG AT or ABV 9000ft
- Track 287° to UPROX
 Cross UPROX AT or ABV 7000ft
- Track 287° to KITTY for RNP W (AR)
 or RNP S (AR) RWY 11 approach

RWY 11 X-RAY:

- From VEGPU track 324° to ITTSA
- Turn LEFT track 287° to OLTEG
 Cross OLTEG AT or ABV 9000ft
- Track 287° to UPROX
 Cross UPROX AT or ABV 7000ft
- Track 287° to KITTY
 Cross KITTY AT or ABV 6000ft
- Track 287° to RELOK
 MAX IAS 230KT from RELOK
- Turn RIGHT track 017° to RIVTO
- Turn RIGHT track 107° to NASUX for
 RNP X (AR) or RNP Y (AR)
 RWY 11 approach

RWY 29 X-RAY:

- **Cross** VEGPU AT or BLW 8000ft
- From VEGPU track 324° to ITTSA
- Turn LEFT track 316° to SARRE
- Turn LEFT track 287° to LAPAR for
 RNP X (AR) or RNP Y (AR)
 RWY 29 approach

COMMUNICATIONS FAILURE: PROCEDURE IN IMC

- Squawk 7600, comply with vertical navigation requirements, but not below MSA.
- Track via the latest STAR clearance to the nominated runway, then fly the most suitable approach in accordance with ERSa EMERG Section 1.5.

Changes: MAG VAR, MSA REFERENCE, Editorial.

PDNSR07-186