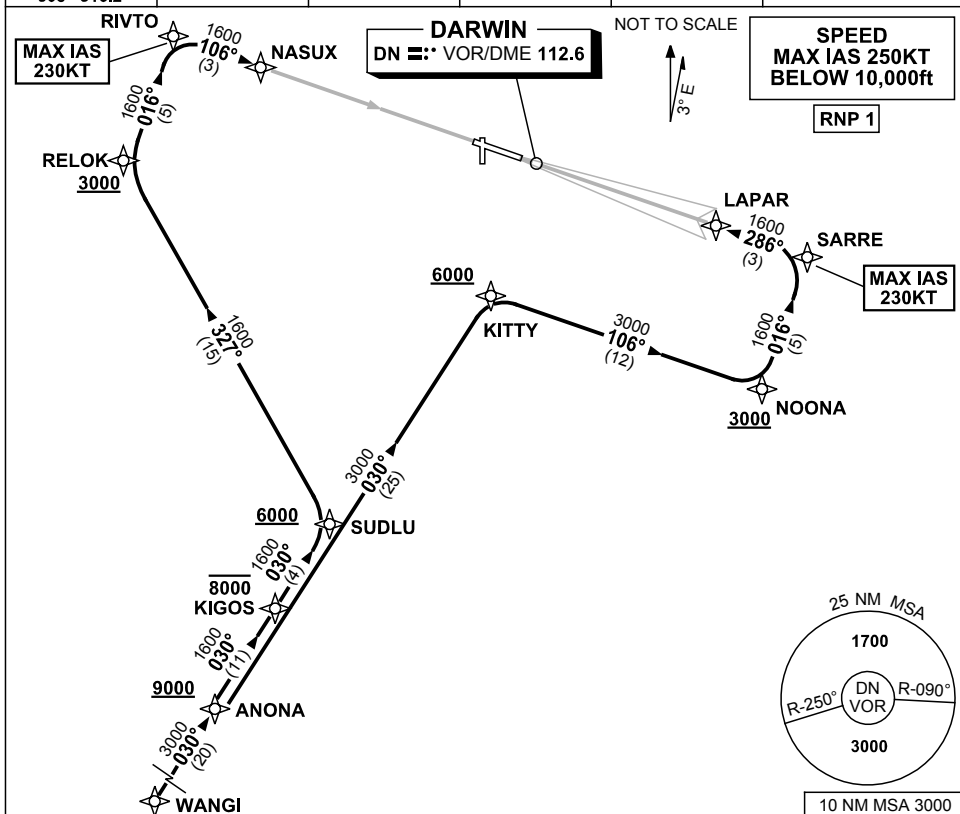


STANDARD INSTRUMENT ARRIVAL (STAR)  
WANGI FIVE ALPHA ARRIVAL (RNAV)  
DARWIN, NT (YPDN)

20 MAR 2025

ATIS 128.25 308 316.2	APP-E 125.2 APP-W 134.1	TWR 133.1	SMC 121.8	Bearings are Magnetic Elevations in FEET AMSL
-----------------------------	----------------------------	--------------	--------------	--------------------------------------------------



**ARRIVAL: WANGI FIVE ALPHA**

**RWY 11:**

- From WANGI track 030° to ANONA  
**Cross** ANONA AT or ABV 9000ft
- Track 030° to KIGOS  
**Cross** KIGOS AT or BLW 8000ft
- Track 030° to SUDLU  
**Cross** SUDLU AT or ABV 6000ft
- Turn LEFT, track 327° to RELOK  
**Cross** RELOK AT or ABV 3000ft
- Turn RIGHT track 016° to RIVTO,  
MAX IAS 230KT from RIVTO
- Turn RIGHT track 106° to NASUX for  
VOR or NDB RWY 11 approach

**RWY 29:**

- From WANGI track 030° to ANONA  
**Cross** ANONA AT or ABV 9000ft
- Track 030° to KITTY  
**Cross** KITTY AT or ABV 6000ft
- Turn RIGHT, track 106° to NOONA  
**Cross** NOONA AT or ABV 3000ft
- Turn LEFT, track 016° to SARRE  
MAX IAS 230KT from SARRE
- Turn LEFT, track 286° to LAPAR for  
ILS or LOC RWY 29 approach

**COMMUNICATIONS FAILURE: PROCEDURE IN IMC**

- Squawk 7600, comply with vertical navigation requirements, but not below MSA.
- Track via the latest STAR clearance to the nominated runway, then fly the most suitable approach in accordance with ERSA EMERG Section 1.5.

Changes: NOONA AND RELOK ALT RQMNTS, SUDLU-RELOK COURSE.

PDNSR05-182