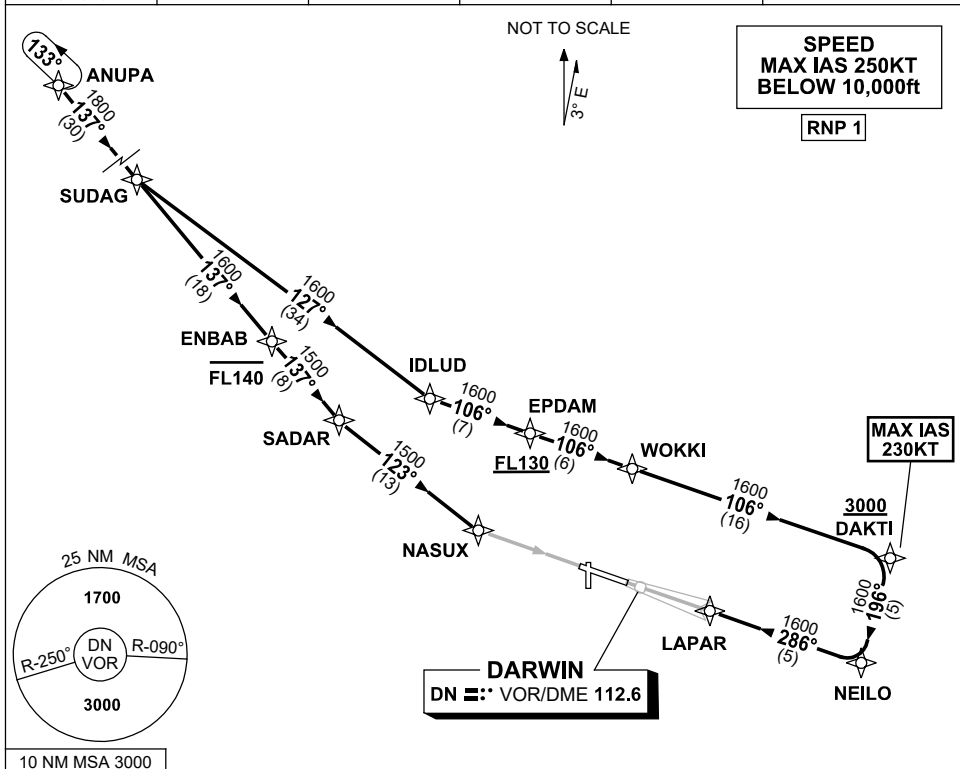


STANDARD INSTRUMENT ARRIVAL (STAR) ANUPA TWO ALPHA ARRIVAL (RNAV) DARWIN, NT (YPDN)

20 MAR 2025

ATIS 128.25 308 316.2	APP-E 125.2 APP-W 134.1	TWR 133.1	SMC 121.8		Bearings are Magnetic Elevations in FEET AMSL
-----------------------------	----------------------------	--------------	--------------	--	--



ARRIVAL: ANUPA TWO ALPHA

RWY 11:

- From ANUPA track 137° to SUDAG
- Track 137° to ENBAB
- Cross** ENBAB AT or BLW FL140
- Track 137° to SADAR
- Turn LEFT, track 123° to NASUX
- for VOR or NDB RWY 11 approach

RWY 29:

- From ANUPA track 137° to SUDAG
- Turn LEFT, track 127° to IDLUD
- Turn LEFT, track 106° to EPDAM
- Cross** EPDAM AT or ABV FL130
- Track 106° to WOKKI
- Track 106° to DAKTI
- Cross** DAKTI AT or ABV 3000ft
- MAX IAS 230KT from DAKTI
- Turn RIGHT, track 196° to NEILO
- Turn RIGHT, track 286° to LAPAR for ILS or LOC RWY 29 approach

COMMUNICATIONS FAILURE: PROCEDURE IN IMC

- Squawk 7600, comply with vertical navigation requirements, but not below MSA.
- Track via the latest STAR clearance to the nominated runway, then fly the most suitable approach in accordance with ERS A EMERG Section 1.5.

Changes: DAKTI ALT RQMNTS, SADAR-NASUX AND NEILO-LAPAR COURSES, VALIDITY INDICATOR.

PDNSR03-182