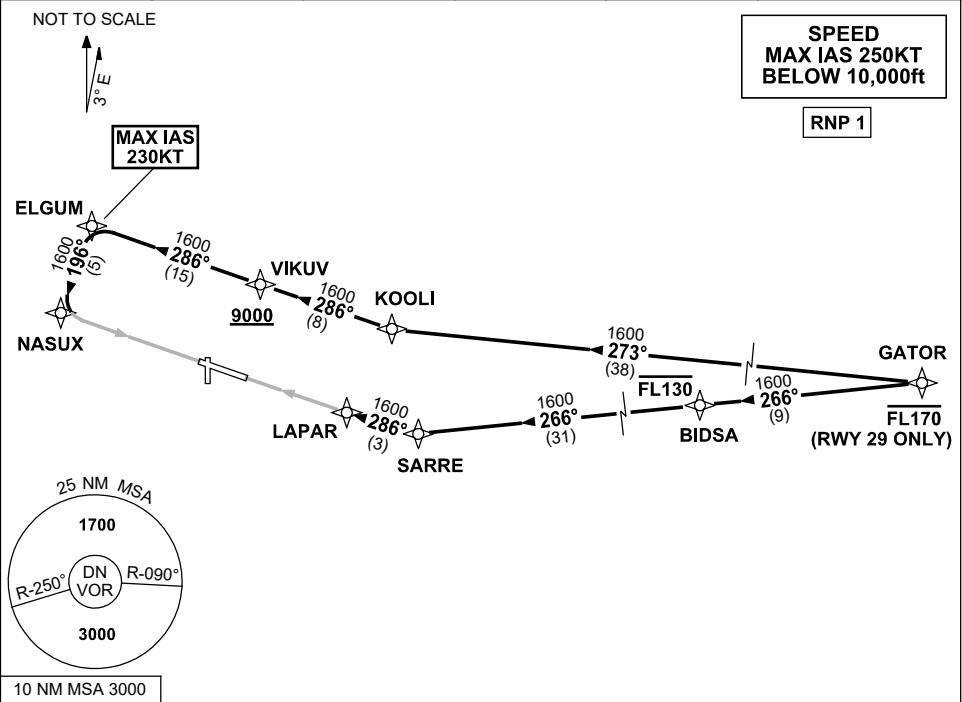


STANDARD INSTRUMENT ARRIVAL (STAR)
GATOR THREE X-RAY ARRIVAL (RNAV)
DARWIN, NT (YPDN)

20 MAR 2025

ATIS 128.25 308 316.2	APP-E 125.2 APP-W 134.1	TWR 133.1	SMC 121.8		Bearings are Magnetic Elevations in FEET AMSL
-----------------------------	----------------------------	--------------	--------------	--	--



ARRIVAL: GATOR THREE X-RAY

RWY 11:

- From GATOR track 273° to KOOLI
- Turn RIGHT, track 286° to VIKUV
- **Cross** VIKUV AT or ABV 9000ft
- Track 286° to ELGUM,
MAX IAS 230KT FROM ELGUM
- Turn LEFT track 196° to NASUX
for RNP X (AR) or RNP Y (AR)
RWY 11 approach

RWY 29:

- **Cross** GATOR AT or BLW FL170
- From GATOR track 266° TO BIDSA
- **Cross** BIDSA AT or BLW FL130
- Track 266° to SARRE
- Turn RIGHT, track 286° to LAPAR for
RNP X (AR) or RNP Y (AR) RWY 29
approach

COMMUNICATIONS FAILURE: PROCEDURE IN IMC

- Squawk 7600, comply with vertical navigation requirements, but not below MSA.
- Track via the latest STAR clearance to the nominated runway, then fly the most suitable approach in accordance with ERSA EMERG Section 1.5.