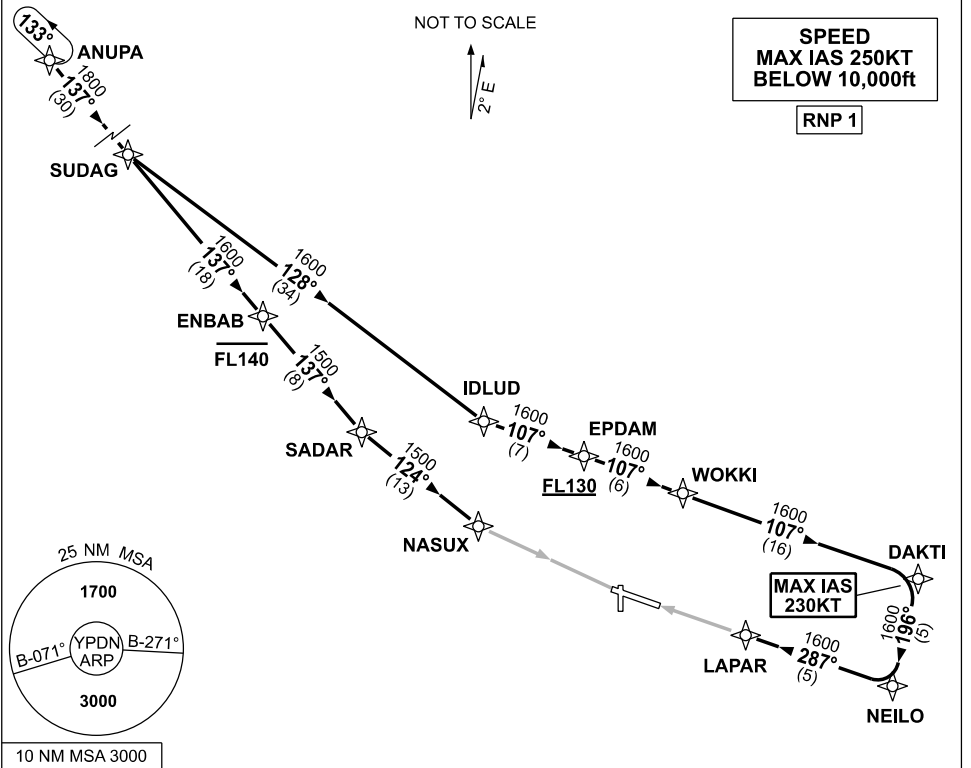


**STANDARD INSTRUMENT ARRIVAL (STAR)
ANUPA TWO X-RAY ARRIVAL (RNAV)
DARWIN, NT (YPDN)**

19 MAR 2026

ATIS 128.25 308 316.2	APP-E 125.2 APP-W 134.1	TWR 133.1	SMC 121.8		Bearings are Magnetic Elevations in FEET AMSL
-----------------------------	----------------------------	--------------	--------------	--	--



ARRIVAL: ANUPA TWO X-RAY

RWY 11:

- From ANUPA track 137° to SUDAG
- Track 137° to ENBAB
- **Cross** ENBAB AT or BLW FL140
- Track 137° to SADAR
- Turn LEFT track 124° to NASUX for RNP X (AR) or RNP Y (AR) RWY 11 approach

RWY 29:

- From ANUPA track 137° to SUDAG
- Turn LEFT track 128° to IDLUD
- Turn LEFT track 107° to EPDAM
- **Cross** EPDAM AT or ABV FL130
- Track 107° to WOKKI
- Track 107° to DAKTI
- MAX IAS 230KT from DAKTI
- Turn RIGHT track 196° to NEILO
- Turn RIGHT track 287° to LAPAR for RNP X (AR) or RNP Y (AR) RWY 29 approach

COMMUNICATIONS FAILURE: PROCEDURE IN IMC

- Squawk 7600, comply with vertical navigation requirements, but not below MSA.
- Track via the latest STAR clearance to the nominated runway, then fly the most suitable approach in accordance with ERSA EMERG Section 1.5.

Changes: MAG VAR, MSA REFERENCE, Editorial. PDNSR01-186