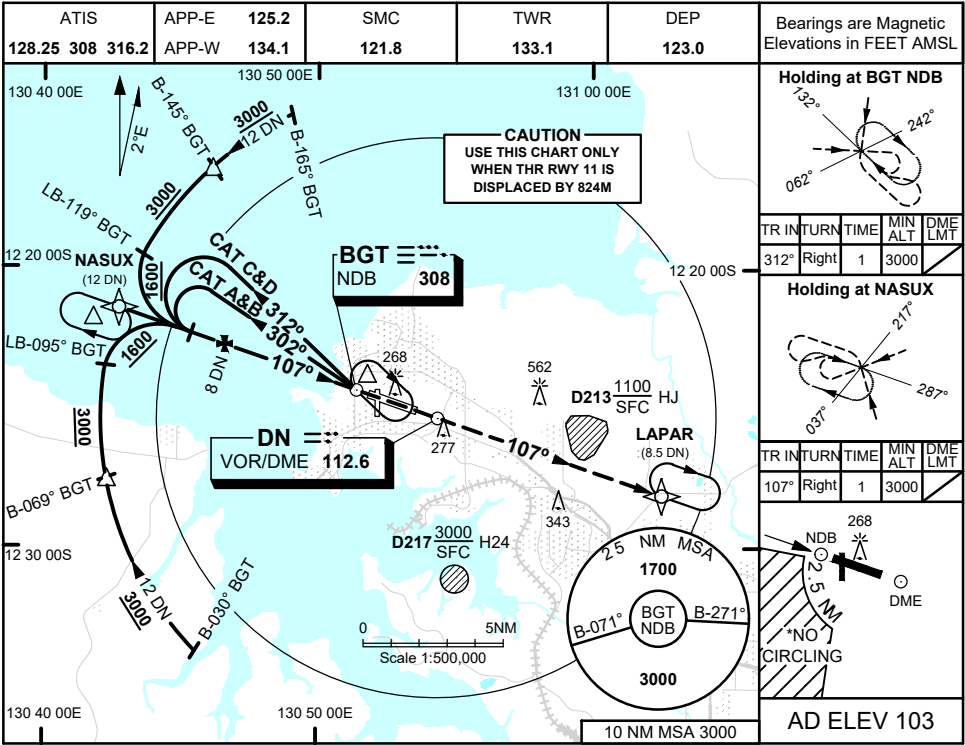
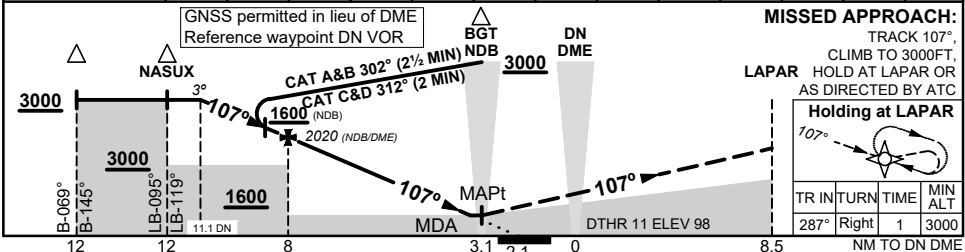


19 MAR 2026



DIST TO DN DME	11.1	10	9	8	7	6	5	4	3.7	3.6		
ALT (3° APCH PATH)	3000	2660	2340	2020	1700	1390	1070	750	660	620		



**NOTES**

1. MAX IAS:  
INITIAL :210KT
2. ACFT MAY BE RADAR VECTORED TO FINAL
- \*3. NO CIRCLING IN SECTOR SW OF RWY 11/29 AND RWY 18/36 BEYOND 2.5 NM
- #4. SPECIAL ALTN MNM 800/4 KM

CATEGORY	A	B	C	D
S-I NDB		660 (557 - 3.1)		
S-I NDB/DME		620 (517 - 2.9)		
CIRCLING*	800 (697 - 2.4)		900 (797 - 4.0)	1100 (997 - 5.0)
ALTERNATE#	(1197 - 4.4)		(1497 - 7.0)	

Changes: VAR.

PDNNB03-186