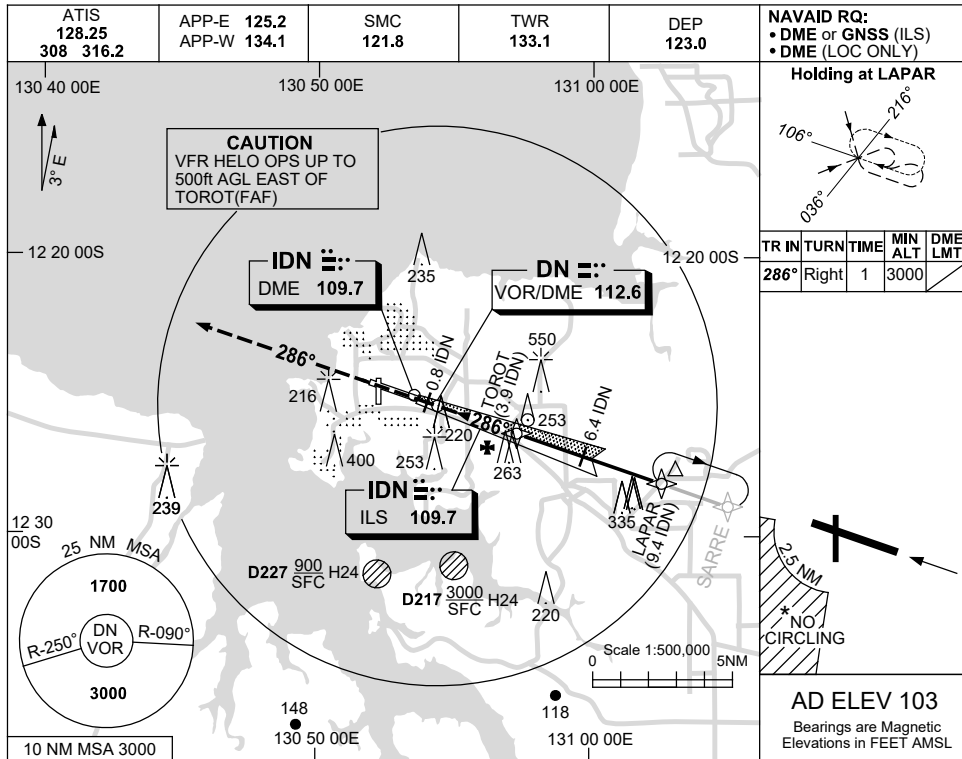


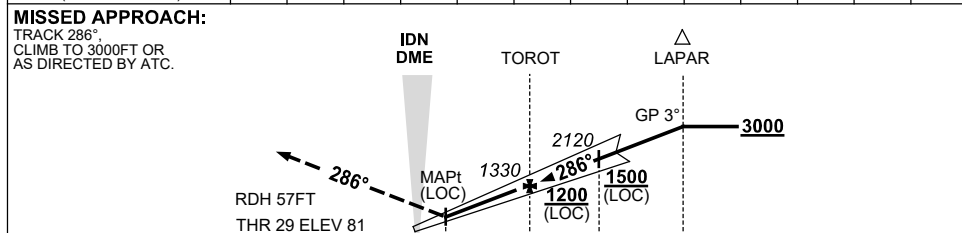
USE QNH

ILS-Z or LOC-Z RWY 29
DARWIN, NT (YPDN)

30 NOV 2023



NM TO IDN DME	1.4	2	3	3.9	5	6	6.4	7	8	9	9.2		
ALT (3° APCH PATH)	520	720	1040	1330	1680	2000	2120	2310	2630	2950	3000		



NM TO IDN DME												
NM TO THR 29												

NOTES

1. ACFT MAY BE RADAR VECTORED TO FNA.
2. SPECIAL ALTN MNM 800/4 KM.
3. DME 41X(110.4) NOT TO BE USED WITH THIS PROCEDURE.
4. NO CIRCLING IN SECTOR SW OF RWY 11/29 AND RWY 18/36 BEYOND 2.5NM.

CATEGORY	A	B	C	D
S-I ILS		290 (209) 0.8		
S-I LOC		520 (439-1.6)		
CIRCLING *	700 (597-2.4)		800 (697-4.0)	1000 (897-5.0)
ALTERNATE ‡	(1097-4.4)		(1197-6.0)	(1397-7.0)

Changes: MAPt DIST, NEW LOGO, Editorial.

PDNII01-177