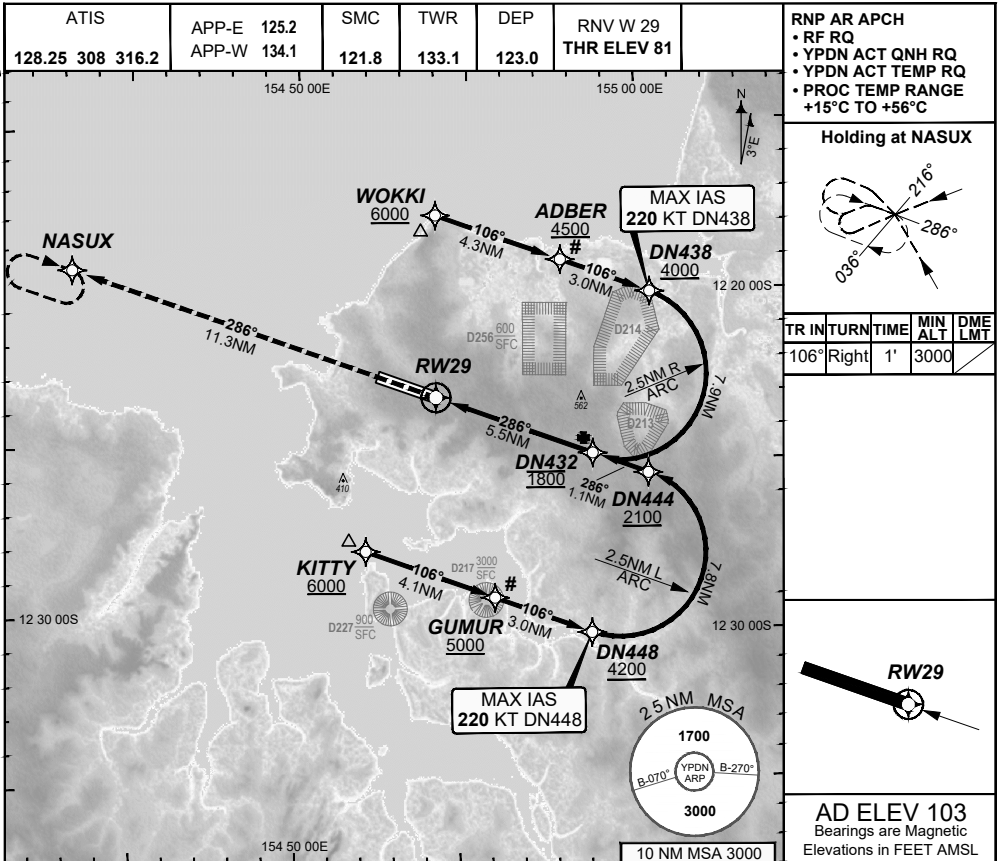


**FOR CASA APPROVED  
OPERATORS ONLY  
USE QNH**

**RNP W RWY 29 (AR)  
DARWIN, NT (YPDN)**

**30 NOV 2023**



	DN432	DN444	DN438			
<b>ALT (2.9° APCH PATH)</b>	1800	2139	4232			

**MISSED APPROACH:**  
Climb to 3000FT or as directed by ATC via the RNP AR Missed Approach track to NASUX.

CATEGORY	A	B	C	D
RNP (0.30)	N/A		DA(H) <b>500</b> (419 - 2.4) 1.5 HIALS	DA(H) <b>500</b> (419 - 2.4) 1.5 HIALS
RNP (0.15)			DA(H) <b>444</b> (363 - 2.1) 1.2 HIALS	DA(H) <b>444</b> (363 - 2.1) 1.2 HIALS
CIRCLING			NOT AUTHORISED	NOT AUTHORISED
ALTERNATE				

**NOTES**

1. PAPI not coincident with VPA.
2. RNP 0.3 RQ FROM WOKKI TO DN432.
3. RNP 0.3 RQ FROM KITTY TO DN432.
4. MIN MAP GRAD 4.1% TO 3000FT per ATC.
- 5#. Latest Intercept Point (LIP)

202307250539 COPYRIGHT © GE DIGITAL, 2023. ALL RIGHTS RESERVED. GE PROPRIETARY INFORMATION

Changes: EDITORIAL

PDNGN19-177

**DO NOT USE FOR NAVIGATION**

© Airservices Australia 2024 Prepared by GE Aviation - ICAO Doc 9905 Compliant

