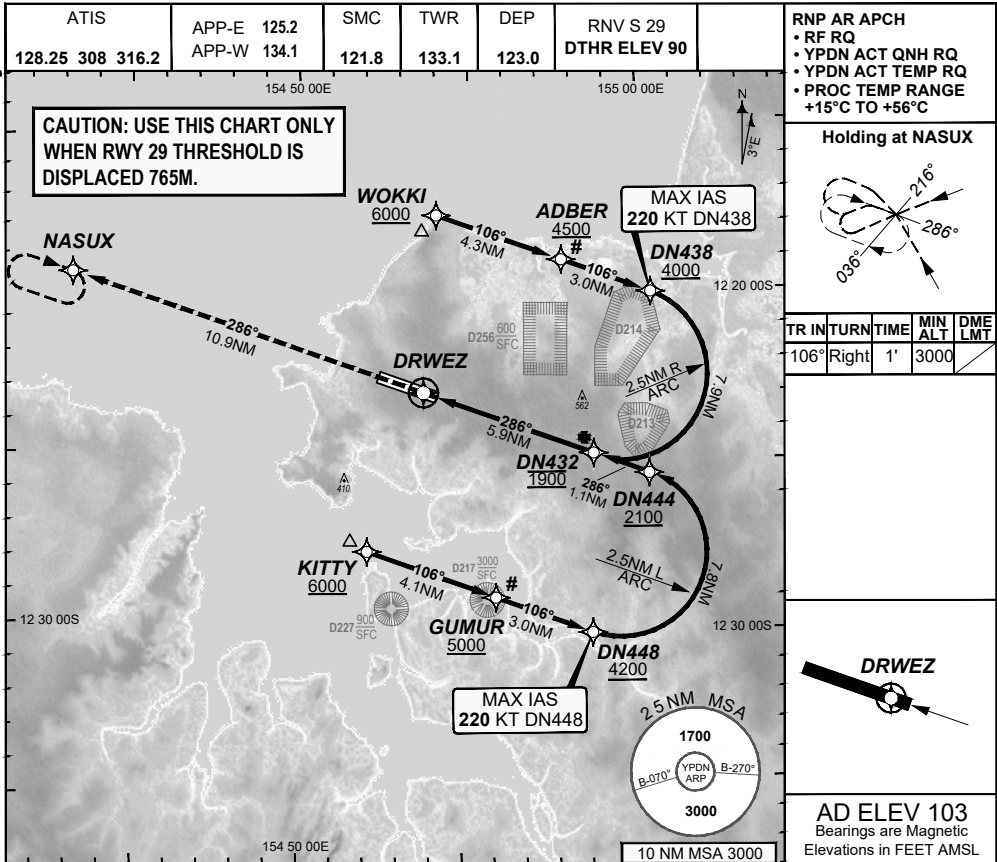


**FOR CASA APPROVED  
OPERATORS ONLY  
USE QNH**

**RNP S RWY 29 (AR)  
DARWIN, NT (YPDN)**

**30 NOV 2023**

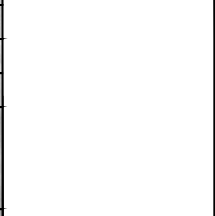


**RNP AR APCH**

- RF RQ
- YPDN ACT QNH RQ
- YPDN ACT TEMP RQ
- PROC TEMP RANGE +15°C TO +56°C

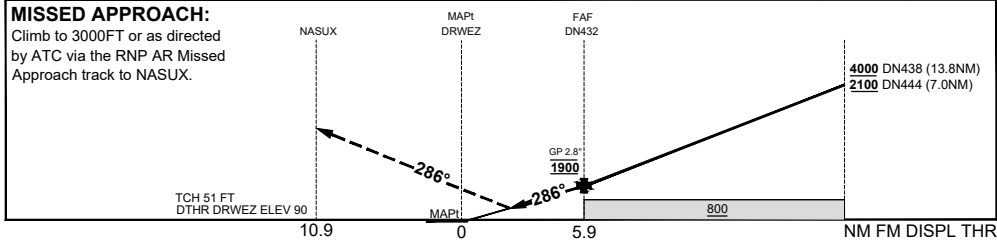
**Holding at NASUX**

| TR IN | TURN  | TIME | MIN ALT | DME LMT |
|-------|-------|------|---------|---------|
| 106°  | Right | 1'   | 3000    |         |



**AD ELEV 103**  
Bearings are Magnetic  
Elevations in FEET AMSL

|                             | DN432 | DN444 | DN438 |
|-----------------------------|-------|-------|-------|
| <b>ALT (2.8° APCH PATH)</b> | 1900  | 2227  | 4248  |



| CATEGORY   | A   | B | C                               | D                               |
|------------|-----|---|---------------------------------|---------------------------------|
| RNP (0.30) |     |   | DA(H) 495 (405 - 2.4) 1.5 HIALS | DA(H) 495 (405 - 2.4) 1.5 HIALS |
| CIRCLING   | N/A |   | NOT AUTHORISED                  | NOT AUTHORISED                  |
| ALTERNATE  |     |   |                                 |                                 |

**NOTES**

1. PAPI not coincident with VPA.
2. RNP 0.3 RQ FROM WOKKI TO DN432.
3. RNP 0.3 RQ FROM KITTY TO DN432.
4. MIN MAP GRAD 4.1% TO 3000FT per ATC.
- 5#. Latest Intercept Point (LIP)

202307250306 COPYRIGHT © GE DIGITAL, 2023. ALL RIGHTS RESERVED. GE PROPRIETARY INFORMATION

Changes: EDITORIAL

PDNGN17-177

**DO NOT USE FOR NAVIGATION**

© Airservices Australia 2024 Prepared by GE Aviation - ICAO Doc 9905 Compliant

