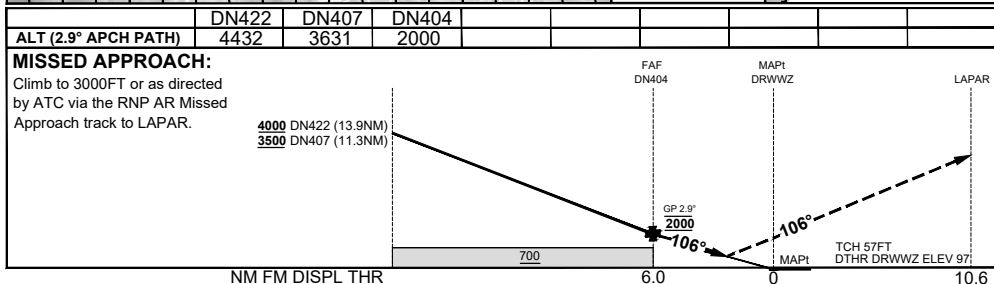
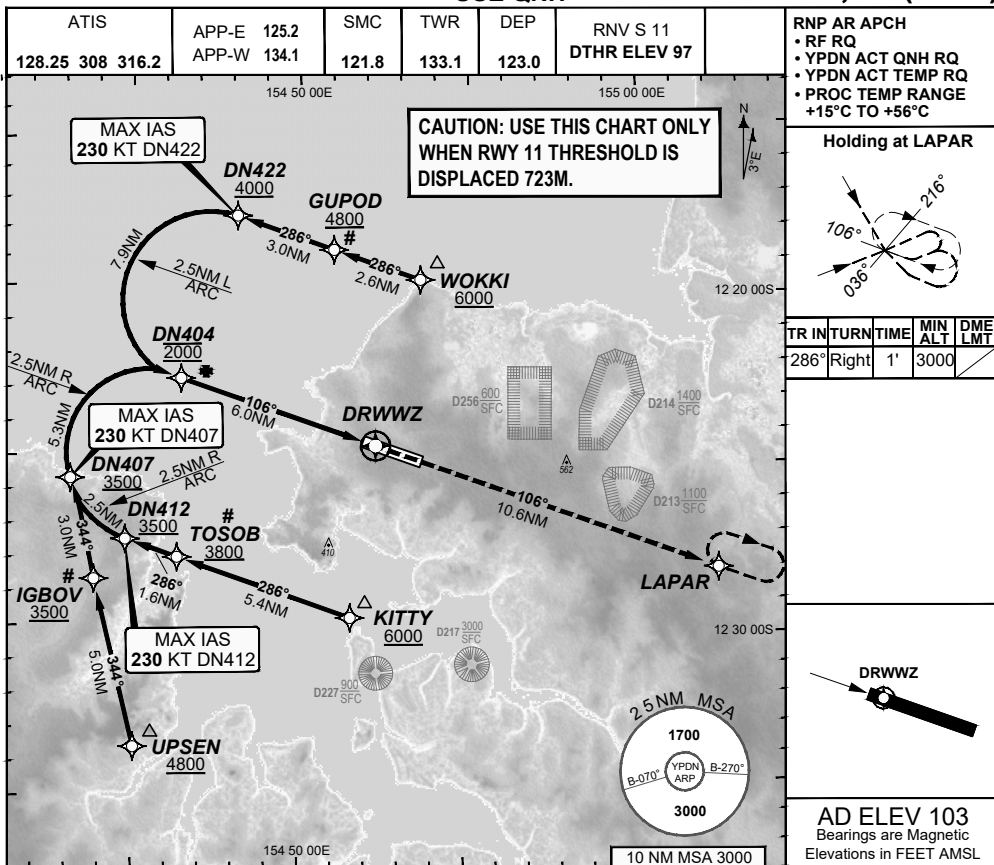


**FOR CASA APPROVED
OPERATORS ONLY
USE QNH**

**RNP S RWY 11 (AR)
DARWIN, NT (YPDN)**

30 NOV 2023



CATEGORY	A	B	C	D
RNP (0.30)	N/A		DA(H) 498 (401 - 2.3)	DA(H) 498 (401 - 2.3)
CIRCLING			NOT AUTHORISED	NOT AUTHORISED
ALTERNATE				

- NOTES**
- PAPI not coincident with VPA.
 - RNP 0.3 RQ FROM WOKKI TO DN404.
 - RNP 0.3 RQ FROM UPSEN TO DN404.
 - RNP 0.3 RQ FROM KITTY TO DN404.
 - MIN MAP GRAD 4.2% TO 3000FT PER ATC.
 - Latest Intercept Point (LIP)

202307250329 COPYRIGHT © GE DIGITAL, 2023. ALL RIGHTS RESERVED. GE PROPRIETARY INFORMATION

Changes: EDITORIAL

PDNGN16-177

DO NOT USE FOR NAVIGATION

© Airservices Australia 2024 Prepared by GE Aviation - ICAO Doc 9905 Compliant

