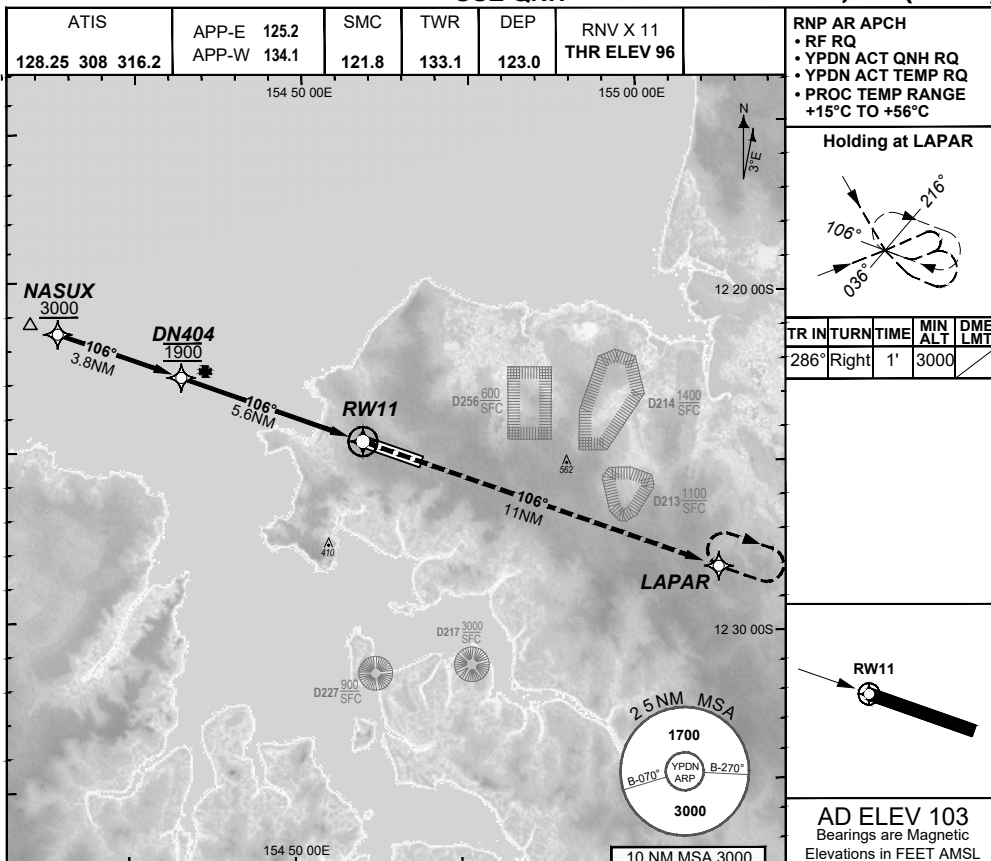


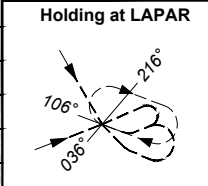
**FOR CASA APPROVED  
OPERATORS ONLY  
USE QNH**

**RNP X RWY 11 (AR)  
DARWIN, NT (YPDN)**

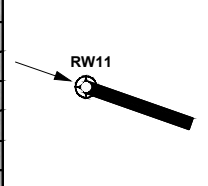
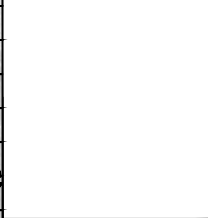
**30 NOV 2023**



**RNP AR APCH**  
 • RF RQ  
 • YPDN ACT QNH RQ  
 • YPDN ACT TEMP RQ  
 • PROC TEMP RANGE  
 +15°C TO +56°C

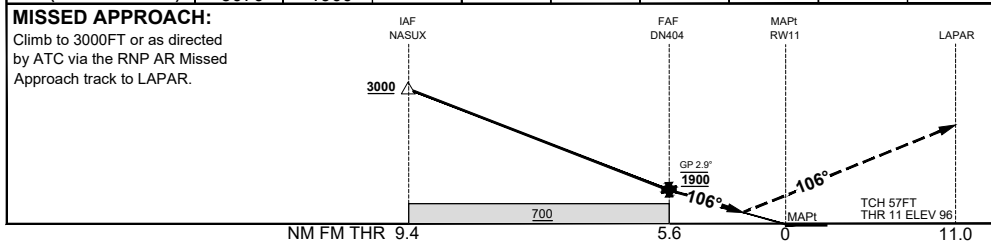


TR IN	TURN	TIME	MIN ALT	DME LMT
286°	Right	1'	3000	



**AD ELEV 103**  
 Bearings are Magnetic  
 Elevations in FEET AMSL

	NASUX	DN404					
<b>ALT (2.9° APCH PATH)</b>	3070	1900					



CATEGORY	A	B	C	D
RNP (0.30)	N/A		DA(H) <b>487</b> (391 - 2.2)	DA(H) <b>487</b> (391 - 2.2)
RNP (0.15)			DA(H) <b>436</b> (340 - 1.9)	DA(H) <b>436</b> (340 - 1.9)
CIRCLING			NOT AUTHORISED	NOT AUTHORISED
ALTERNATE				

- NOTES**
- PAPI not coincident with VPA.
  - RNP 0.3 RQ FROM NASUX TO DN404.
  - MIN MAP GRAD 4.2% TO 3000FT per ATC.

202307250324 COPYRIGHT © GE DIGITAL, 2023. ALL RIGHTS RESERVED. GE PROPRIETARY INFORMATION

Changes: EDITORIAL

PDNGN14-177

**DO NOT USE FOR NAVIGATION**

© Airservices Australia 2024 Prepared by GE Aviation - ICAO Doc 9905 Compliant

