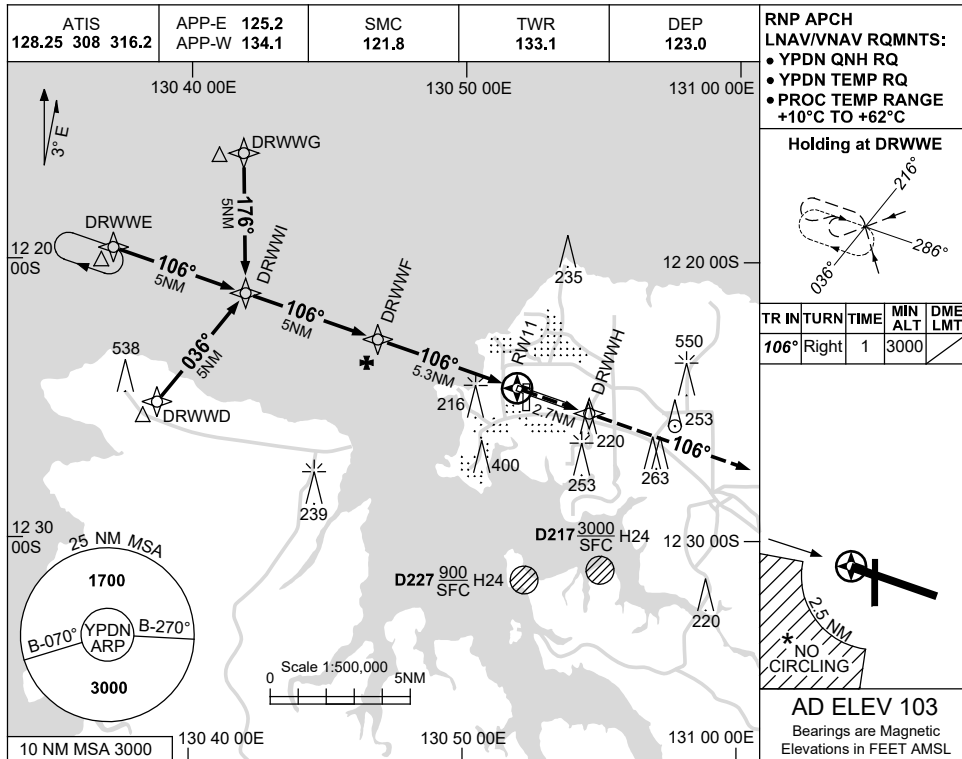
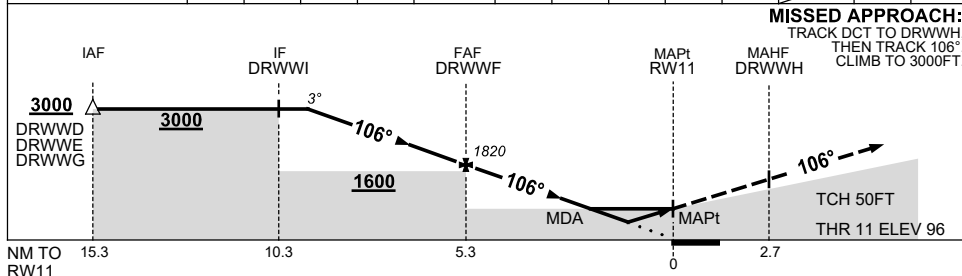


1 DEC 2022



NM TO NEXT WPT	3.7	3	2	1	DRWWF	4	3	2	1.2	0.9	RW11		
ALT (3° APCH PATH)	3000	2780	2460	2140	1820	1420	1100	780	520	430			



NOTES

CATEGORY	A	B	C	D
LNAV/VNAV		430	(334-1.9)	
LNAV		520	(417-2.3)	
CIRCLING *	700 (597-2.4)		800 (697-4.0)	1000 (897-5.0)
ALTERNATE	(1097-4.4)		(1197-6.0)	(1397-7.0)

1. MAX IAS:
INITIAL : 210KT.
- * 2. NO CIRCLING IN SECTOR
SW OF RWY 11/29 AND
RWY 18/36 BEYOND 2.5NM.

Changes: CHART TITLE, PBN SPECIFICATION BOX.

PDNGN02-173