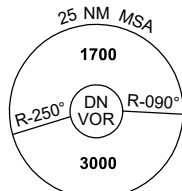
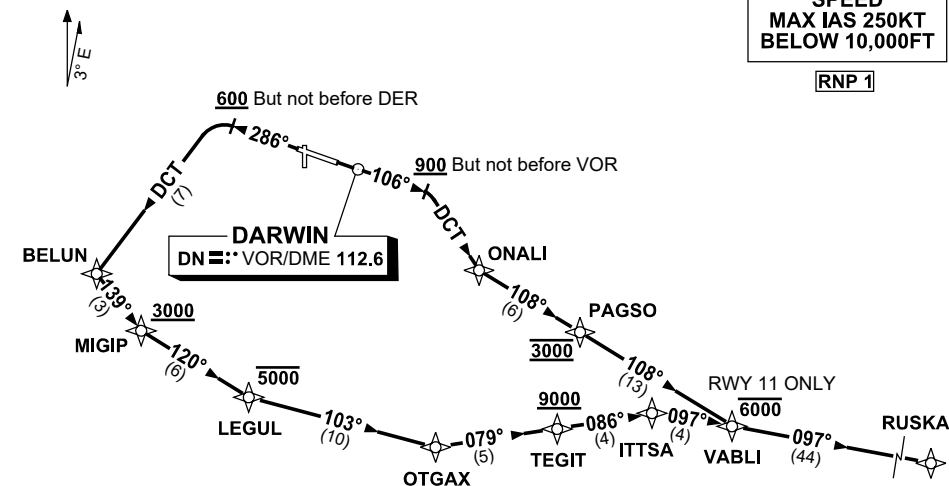


STANDARD INSTRUMENT DEPARTURES (SID)
 RUSKA SIX DEPARTURE (NON-JET) (RNAV)
DARWIN, NT (YPDN)

1 DEC 2022

ATIS 128.25 308 316.2	ACD 126.8	SMC 121.8	TWR 133.1	APP-E 125.2 APP-W 134.1	Bearings are Magnetic Elevations in FEET AMSL
-----------------------------	--------------	--------------	--------------	----------------------------	--

NOT TO SCALE



10 NM MSA 3000

RUSKA SIX DEPARTURE

RWY 11

- GRAD 3.3%
- Track 106°
- AT or ABV 900ft, but not before VOR turn RIGHT, track DCT to ONALI
- Turn LEFT, track 108° to PAGSO
Cross PAGSO AT 3000ft
- Track 108° to VABLI
Cross VABLI AT or BLW 6000ft
- Turn LEFT, track 097° to RUSKA

RWY 29

- GRAD 3.3% (GRAD 7% to 3000ft)
- Track 286°
- AT or ABV 600ft, but not before DER turn LEFT, track DCT to BELUN
- Turn LEFT, track 139° to MIGIP
Cross MIGIP AT or ABV 3000ft
- Turn LEFT, track 120° to LEGUL
Cross LEGUL AT or BLW 5000ft
- Turn LEFT, track 103° to OTGAX
- Turn LEFT, track 079° to TEGIT
Cross TEGIT AT or ABV 9000ft
- Turn RIGHT, track 086° to ITTSA
- Turn RIGHT, track 097° to VABLI
- Track 097° to RUSKA

Changes: MAG VAR.

PDNDP09-173